

076-0004  
191 HARTWELL ROAD  
N/F  
HARTWELL HILL LLC

082-0001  
HANSKOM FIELD  
N/F  
MASSPORT AUTHORITY  
THOMAS W ENNIS  
ECONOMIC PLANNING & DEVELOPMENT

INSTALL 6 - 5" PVC PIPES  
TYPE EB IN CONCRETE  
SECTION 2 FIG. 5

SHEET 1  
SHEET 2

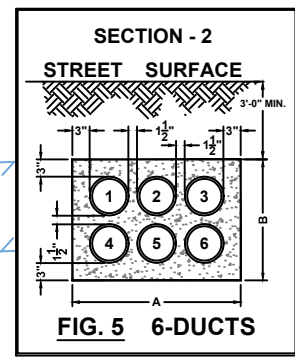
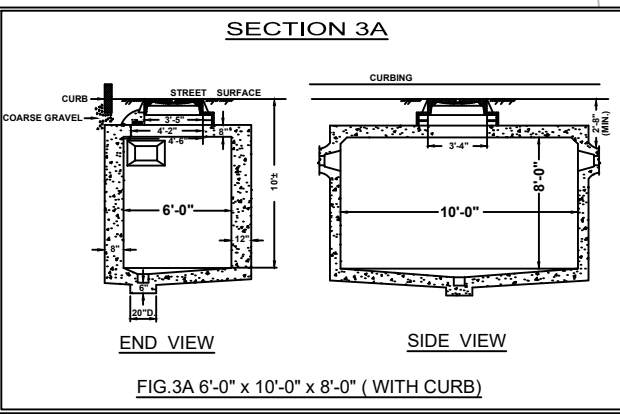
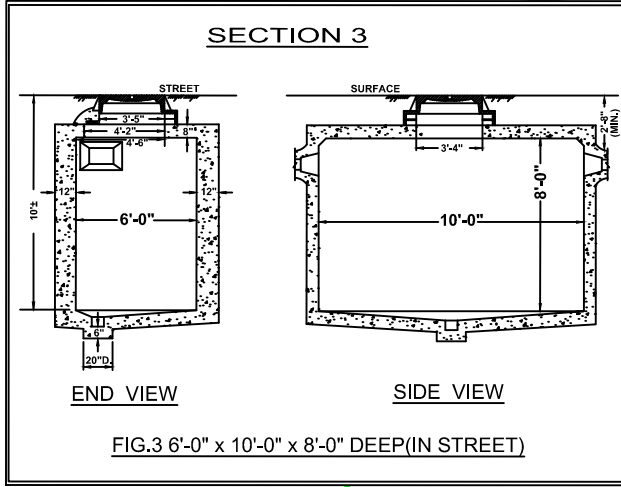
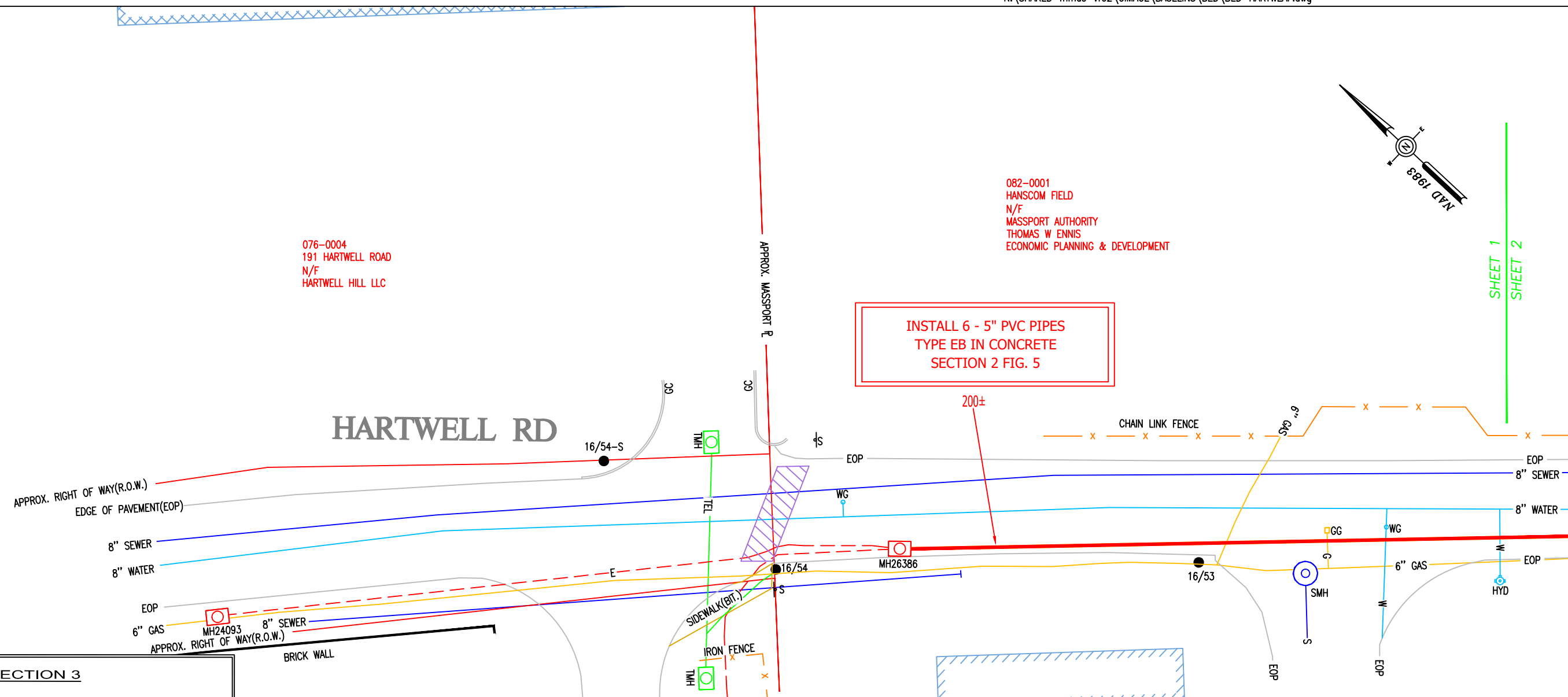
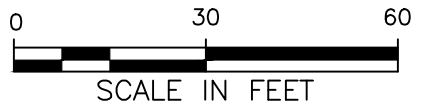


FIG	4" Ducts		5" Ducts		6" Ducts	
	A Inches	B Inches	A Inches	B Inches	A Inches	B Inches
1A	10"	10"	11"	11"	12"	12"
1	16 1/2"	10 1/2"	18 1/2"	11 1/2"	21"	12 1/2"
2	22 1/2"	10 1/2"	25 1/2"	11 1/2"	29"	12 1/2"
3	28 1/2"	10 1/2"	32 1/2"	11 1/2"	37"	12 1/2"
4	16 1/2"	16 1/2"	18 1/2"	18 1/2"	21"	21"
5	22 1/2"	16 1/2"	25 1/2"	18 1/2"	29"	21"
6	16 1/2"	22 1/2"	18 1/2"	25 1/2"	21"	29"
7	16 1/2"	28 1/2"	18 1/2"	32 1/2"	21"	37"
8	28 1/2"	16 1/2"	32 1/2"	18 1/2"	37"	21"
9	22 1/2"	22 1/2"	25 1/2"	25 1/2"	29"	29"
10	34 1/2"	16 1/2"	39 1/2"	18 1/2"	45"	21"
11	16 1/2"	34 1/2"	18 1/2"	39 1/2"	21"	45"
12	22 1/2"	26 1/2"	25 1/2"	32 1/2"	29"	37"
13	28 1/2"	22 1/2"	32 1/2"	25 1/2"	37"	29"
14	40 1/2"	16 1/2"	46 1/2"	18 1/2"	53 1/2"	21"
15	16 1/2"	40 1/2"	18 1/2"	46 1/2"	21"	53 1/2"
16	16 1/2"	46 1/2"	18 1/2"	53 1/2"	21"	61"

076-0002  
180 HARTWELL ROAD  
N/F  
ILC PROPERTY LLC  
C/O INSTRUMENTATION LABORATORY  
180 HARTWELL RD.

082-0001  
HANSKOM FIELD  
N/F  
MASSPORT AUTHORITY  
THOMAS W ENNIS  
ECONOMIC PLANNING & DEVELOPMENT



BY YOUR USE OF THE INFORMATION CONTAINED IN THIS MAP, YOU AGREE THAT NO WARRANTY OF ANY KIND, EXPRESS OR IMPLIED, IS GIVEN WITH RESPECT TO THE INFORMATION. NEITHER NSTAR ELECTRIC COMPANY, NSTAR GAS COMPANY NOR ITS PARENTS, AFFILIATES, OFFICERS, DIRECTORS, SHAREHOLDERS, EMPLOYEES OR AGENTS (COLLECTIVELY THE "NSTAR ENTITIES") SHALL BE LIABLE FOR ANY LOSS OR INJURY CAUSED IN WHOLE OR IN PART BY USE OF THIS INFORMATION, OR IN RELIANCE UPON IT, TO THE MAXIMUM EXTENT ALLOWED BY LAW. YOU AGREE BY YOUR ACCEPTANCE OF THE INFORMATION TO RELEASE, INDEMNIFY AND HOLD THE NSTAR ENTITIES HARMLESS FROM ANY SUCH LOSS OR INJURY.

THE INFORMATION MAY NOT REPRESENT A SURVEY, MAY NOT BE THE MOST COMPLETE AND IS SUBJECT TO CHANGE WITHOUT NOTICE. NO LIABILITY IS ASSUMED FOR THE ACCURACY OF THE INFORMATION, EITHER EXPRESSED OR IMPLIED. UNAUTHORIZED ATTEMPTS TO MODIFY THE INFORMATION OR USE THE INFORMATION FOR OTHER THAN ITS INTENDED PURPOSES ARE PROHIBITED.

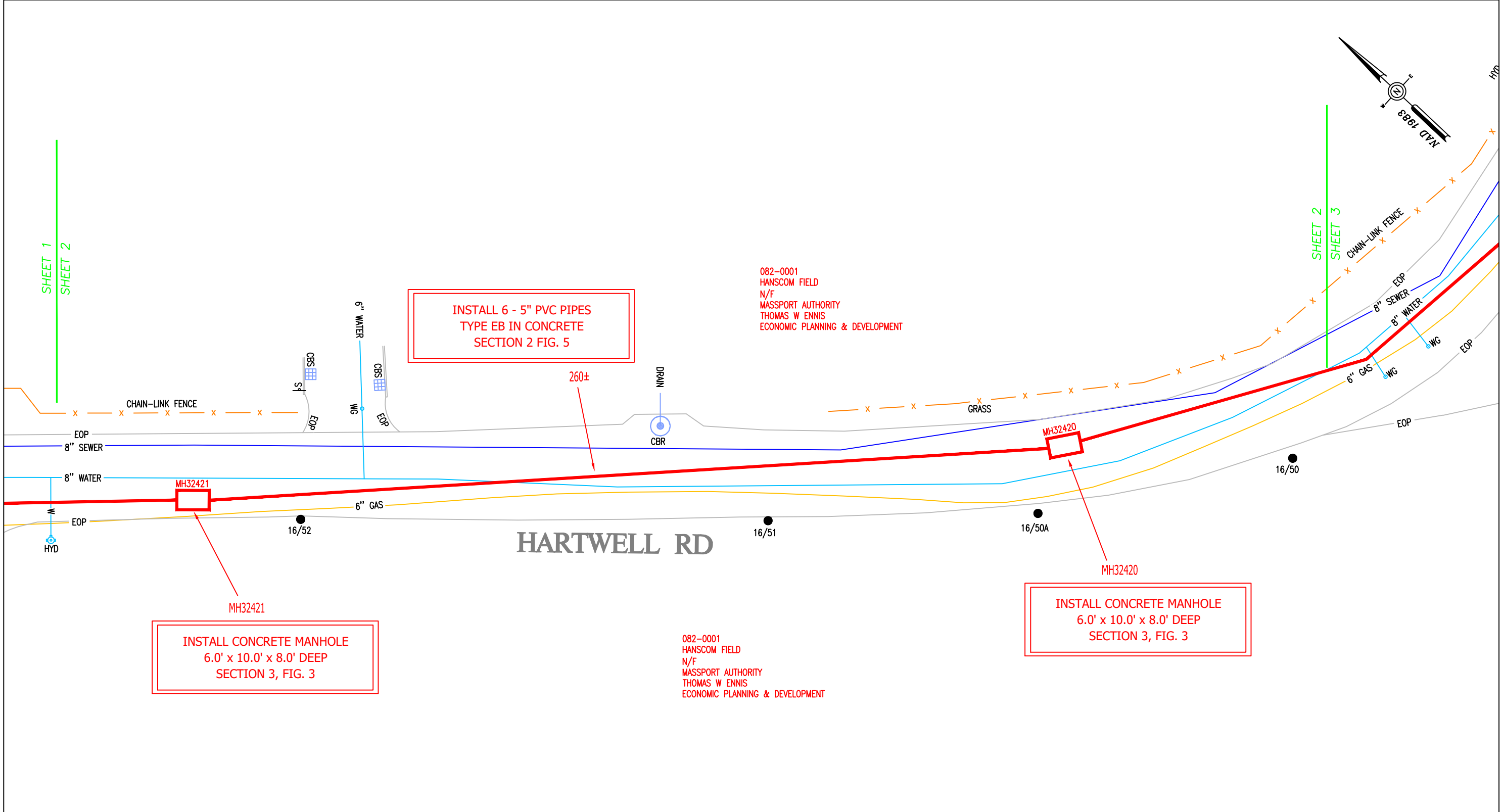
**MASS. LAW**  
REQUIRES 72 HOURS ADVANCE NOTICE TO UTILITY COMPANIES  
BEFORE DIGGING BY ANYONE. CALL DIG-SAFE 1-888-344-7233

C# 177-24
Ward #
Work Order # 16205080
Surveyed by: SJ/LM/JC
Research by: GR
Plotted by: SJ
Proposed Structures: SJ
Approved: K. RICE
P#

**NSTAR EVERSOURCE**  
ELECTRIC  
d/b/a  
1165 MASSACHUSETTS AVE. DORCHESTER, MASS. 02125

Plan of HARTWELL ROAD  
BEDFORD  
Showing PROPOSED MANHOLE AND CONDUIT LOCATIONS

Scale 1"=30' Date JULY 18, 2024  
SHEET 1 of 15



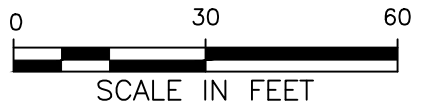
INSTALL 6 - 5" PVC PIPES  
TYPE EB IN CONCRETE  
SECTION 2 FIG. 5

INSTALL CONCRETE MANHOLE  
6.0' x 10.0' x 8.0' DEEP  
SECTION 3, FIG. 3

INSTALL CONCRETE MANHOLE  
6.0' x 10.0' x 8.0' DEEP  
SECTION 3, FIG. 3

082-0001  
HANSCOM FIELD  
N/F  
MASSPORT AUTHORITY  
THOMAS W ENNIS  
ECONOMIC PLANNING & DEVELOPMENT

082-0001  
HANSCOM FIELD  
N/F  
MASSPORT AUTHORITY  
THOMAS W ENNIS  
ECONOMIC PLANNING & DEVELOPMENT



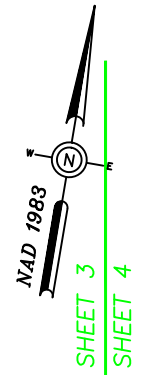
BY YOUR USE OF THE INFORMATION CONTAINED IN THIS MAP, YOU AGREE THAT NO WARRANTY OF ANY KIND, EXPRESS OR IMPLIED, IS GIVEN WITH RESPECT TO THE INFORMATION. NEITHER NSTAR ELECTRIC COMPANY, NSTAR GAS COMPANY NOR ITS PARENTS, AFFILIATES, OFFICERS, DIRECTORS, SHAREHOLDERS, EMPLOYEES OR AGENTS (COLLECTIVELY THE "NSTAR ENTITIES") SHALL BE LIABLE FOR ANY LOSS OR INJURY CAUSED IN WHOLE OR IN PART BY USE OF THIS INFORMATION OR IN RELIANCE UPON IT, TO THE MAXIMUM EXTENT ALLOWED BY LAW. YOU AGREE BY YOUR ACCEPTANCE OF THE INFORMATION TO RELEASE, INDEMNIFY AND HOLD THE NSTAR ENTITIES HARMLESS FROM ANY SUCH LOSS OR INJURY.

THE INFORMATION MAY NOT REPRESENT A SURVEY, MAY NOT BE THE MOST COMPLETE AND IS SUBJECT TO CHANGE WITHOUT NOTICE. NO LIABILITY IS ASSUMED FOR THE ACCURACY OF THE INFORMATION, EITHER EXPRESSED OR IMPLIED. UNAUTHORIZED ATTEMPTS TO MODIFY THE INFORMATION OR USE THE INFORMATION FOR OTHER THAN ITS INTENDED PURPOSES ARE PROHIBITED.

**MASS. LAW**  
REQUIRES 72 HOURS ADVANCE NOTICE TO UTILITY COMPANIES  
BEFORE DIGGING BY ANYONE. CALL DIG-SAFE 1-888-344-7233

C# 177-24
Ward #
Work Order # 16205080
Surveyed by: SJ/LM/JC
Research by: GR
Plotted by: SJ
Proposed Structures: SJ
Approved: K. RICE
P#

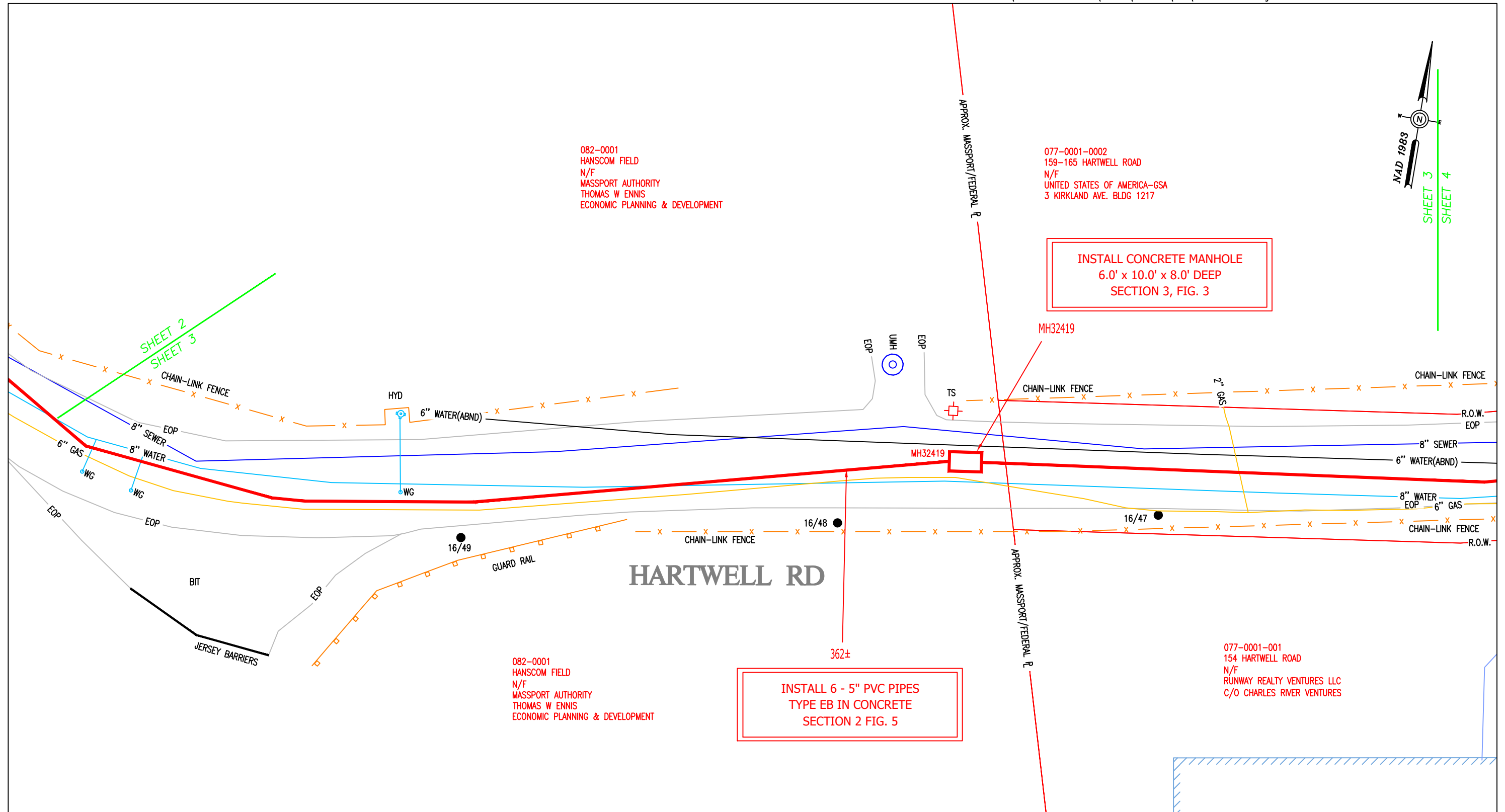
<b>NSTAR EVERSOURCE</b> ELECTRIC d/b/a 1165 MASSACHUSETTS AVE. DORCHESTER, MASS. 02125	
Plan of HARTWELL ROAD BEDFORD	
Showing PROPOSED MANHOLE AND CONDUIT LOCATIONS	
Scale 1"=30'	Date JULY 18, 2024
SHEET 2 of 15	



082-0001  
 HANSCOM FIELD  
 N/F  
 MASSPORT AUTHORITY  
 THOMAS W ENNIS  
 ECONOMIC PLANNING & DEVELOPMENT

077-0001-0002  
 159-165 HARTWELL ROAD  
 N/F  
 UNITED STATES OF AMERICA-GSA  
 3 KIRKLAND AVE. BLDG 1217

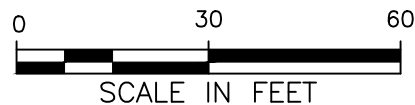
INSTALL CONCRETE MANHOLE  
 6.0' x 10.0' x 8.0' DEEP  
 SECTION 3, FIG. 3



082-0001  
 HANSCOM FIELD  
 N/F  
 MASSPORT AUTHORITY  
 THOMAS W ENNIS  
 ECONOMIC PLANNING & DEVELOPMENT

077-0001-001  
 154 HARTWELL ROAD  
 N/F  
 RUNWAY REALTY VENTURES LLC  
 C/O CHARLES RIVER VENTURES

INSTALL 6 - 5" PVC PIPES  
 TYPE EB IN CONCRETE  
 SECTION 2 FIG. 5



SCALE IN FEET

BY YOUR USE OF THE INFORMATION CONTAINED IN THIS MAP, YOU AGREE THAT NO WARRANTY OF ANY KIND, EXPRESS OR IMPLIED, IS GIVEN WITH RESPECT TO THE INFORMATION. NEITHER NSTAR ELECTRIC COMPANY, NSTAR GAS COMPANY NOR ITS PARENTS, AFFILIATES, OFFICERS, DIRECTORS, SHAREHOLDERS, EMPLOYEES OR AGENTS (COLLECTIVELY THE "NSTAR ENTITIES") SHALL BE LIABLE FOR ANY LOSS OR INJURY CAUSED IN WHOLE OR IN PART BY USE OF THIS INFORMATION OR IN RELIANCE UPON IT, TO THE MAXIMUM EXTENT ALLOWED BY LAW. YOU AGREE BY YOUR ACCEPTANCE OF THE INFORMATION TO RELEASE, INDEMNIFY AND HOLD THE NSTAR ENTITIES HARMLESS FROM ANY SUCH LOSS OR INJURY.

THE INFORMATION MAY NOT REPRESENT A SURVEY, MAY NOT BE THE MOST COMPLETE AND IS SUBJECT TO CHANGE WITHOUT NOTICE. NO LIABILITY IS ASSUMED FOR THE ACCURACY OF THE INFORMATION, EITHER EXPRESSED OR IMPLIED. UNAUTHORIZED ATTEMPTS TO MODIFY THE INFORMATION OR USE THE INFORMATION FOR OTHER THAN ITS INTENDED PURPOSES ARE PROHIBITED.

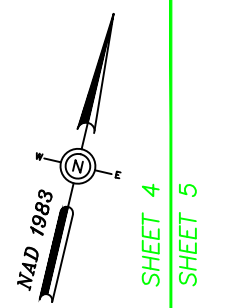
**MASS. LAW**

REQUIRES 72 HOURS ADVANCE NOTICE TO UTILITY COMPANIES BEFORE DIGGING BY ANYONE. CALL DIG-SAFE 1-888-344-7233

C# 177-24
Ward #
Work Order # 16205080
Surveyed by: SJ/LM/JC
Research by: GR
Plotted by: SJ
Proposed Structures: SJ
Approved: K. RICE
P#

<b>NSTAR EVERSOURCE</b> ELECTRIC d/b/a	
1165 MASSACHUSETTS AVE. DORCHESTER, MASS. 02125	
Plan of HARTWELL ROAD	
BEDFORD	
Showing PROPOSED MANHOLE AND CONDUIT LOCATIONS	
Scale	1"=30'
Date	JULY 18, 2024
SHEET	3 of 15

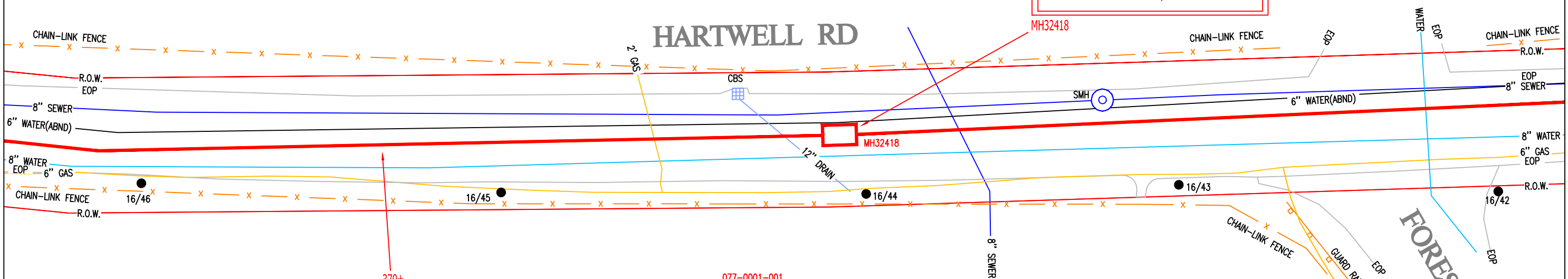
SHEET 3  
SHEET 4



077-0001-0002  
159-165 HARTWELL ROAD  
N/F  
UNITED STATES OF AMERICA-GSA  
3 KIRKLAND AVE. BLDG 1217

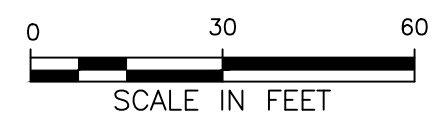
INSTALL CONCRETE MANHOLE  
6.0' x 10.0' x 8.0' DEEP  
SECTION 3, FIG. 3

HARTWELL RD



INSTALL 6 - 5" PVC PIPES  
TYPE EB IN CONCRETE  
SECTION 2 FIG. 5

077-0001-001  
154 HARTWELL ROAD  
N/F  
RUNWAY REALTY VENTURES LLC  
C/O CHARLES RIVER VENTURES



BY YOUR USE OF THE INFORMATION CONTAINED IN THIS MAP, YOU AGREE THAT NO WARRANTY OF ANY KIND, EXPRESS OR IMPLIED, IS GIVEN WITH RESPECT TO THE INFORMATION. NEITHER NSTAR ELECTRIC COMPANY, NSTAR GAS COMPANY NOR ITS PARENTS, AFFILIATES, OFFICERS, DIRECTORS, SHAREHOLDERS, EMPLOYEES OR AGENTS (COLLECTIVELY THE "NSTAR ENTITIES") SHALL BE LIABLE FOR ANY LOSS OR INJURY CAUSED IN WHOLE OR IN PART BY USE OF THIS INFORMATION OR IN RELIANCE UPON IT, TO THE MAXIMUM EXTENT ALLOWED BY LAW. YOU AGREE BY YOUR ACCEPTANCE OF THE INFORMATION TO RELEASE, INDEMNIFY AND HOLD THE NSTAR ENTITIES HARMLESS FROM ANY SUCH LOSS OR INJURY.

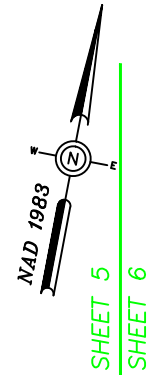
THE INFORMATION MAY NOT REPRESENT A SURVEY, MAY NOT BE THE MOST COMPLETE AND IS SUBJECT TO CHANGE WITHOUT NOTICE. NO LIABILITY IS ASSUMED FOR THE ACCURACY OF THE INFORMATION, EITHER EXPRESSED OR IMPLIED. UNAUTHORIZED ATTEMPTS TO MODIFY THE INFORMATION OR USE THE INFORMATION FOR OTHER THAN ITS INTENDED PURPOSES ARE PROHIBITED.

**MASS. LAW**  
REQUIRES 72 HOURS ADVANCE NOTICE TO UTILITY COMPANIES  
BEFORE DIGGING BY ANYONE. CALL DIG-SAFE 1-888-344-7233

C# 177-24
Ward #
Work Order # 16205080
Surveyed by: SJ/LM/JC
Research by: GR
Plotted by: SJ
Proposed Structures: SJ
Approved: K. RICE
P#

<b>NSTAR EVERSOURCE</b> <small>ELECTRIC d/b/a</small>	
1165 MASSACHUSETTS AVE. DORCHESTER, MASS. 02125	
Plan of HARTWELL ROAD BEDFORD	
Showing PROPOSED MANHOLE AND CONDUIT LOCATIONS	
Scale	1"=30'
Date	JULY 18, 2024
SHEET	4 of 15

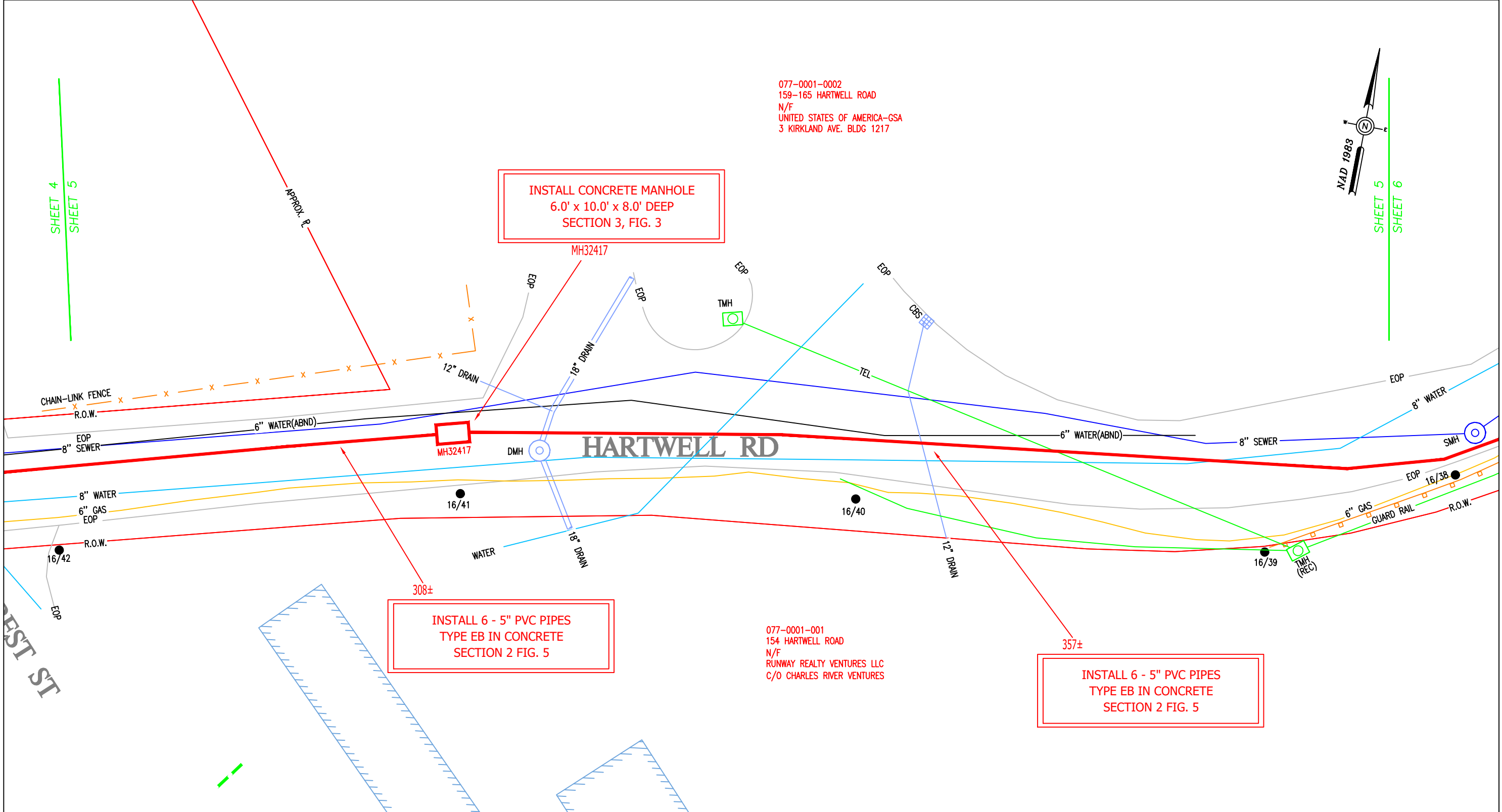
077-0001-0002  
 159-165 HARTWELL ROAD  
 N/F  
 UNITED STATES OF AMERICA-GSA  
 3 KIRKLAND AVE. BLDG 1217



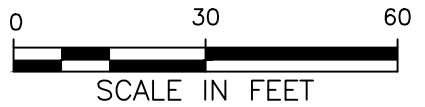
**INSTALL CONCRETE MANHOLE  
 6.0' x 10.0' x 8.0' DEEP  
 SECTION 3, FIG. 3**

**INSTALL 6 - 5" PVC PIPES  
 TYPE EB IN CONCRETE  
 SECTION 2 FIG. 5**

**INSTALL 6 - 5" PVC PIPES  
 TYPE EB IN CONCRETE  
 SECTION 2 FIG. 5**



WEST ST

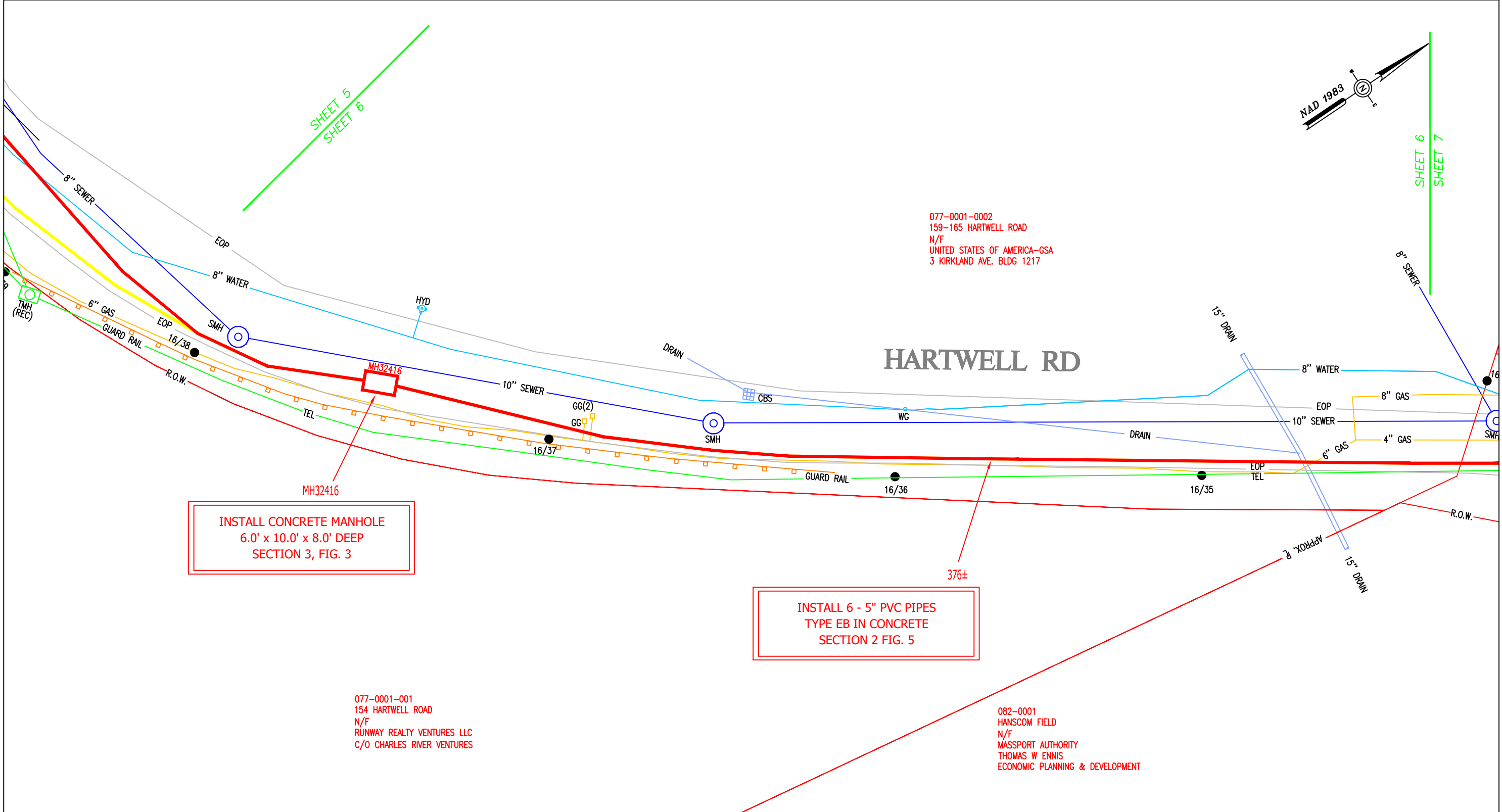
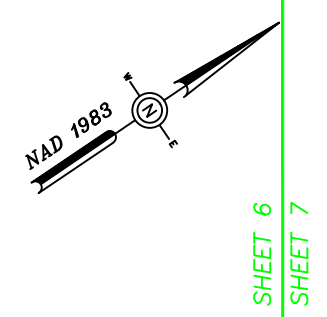


BY YOUR USE OF THE INFORMATION CONTAINED IN THIS MAP, YOU AGREE THAT NO WARRANTY OF ANY KIND, EXPRESS OR IMPLIED, IS GIVEN WITH RESPECT TO THE INFORMATION. NEITHER NSTAR ELECTRIC COMPANY, NSTAR GAS COMPANY NOR ITS PARENTS, AFFILIATES, OFFICERS, DIRECTORS, SHAREHOLDERS, EMPLOYEES OR AGENTS (COLLECTIVELY THE "NSTAR ENTITIES") SHALL BE LIABLE FOR ANY LOSS OR INJURY CAUSED IN WHOLE OR IN PART BY USE OF THIS INFORMATION OR IN RELIANCE UPON IT, TO THE MAXIMUM EXTENT ALLOWED BY LAW. YOU AGREE BY YOUR ACCEPTANCE OF THE INFORMATION TO RELEASE, INDEMNIFY AND HOLD THE NSTAR ENTITIES HARMLESS FROM ANY SUCH LOSS OR INJURY.

THE INFORMATION MAY NOT REPRESENT A SURVEY, MAY NOT BE THE MOST COMPLETE AND IS SUBJECT TO CHANGE WITHOUT NOTICE. NO LIABILITY IS ASSUMED FOR THE ACCURACY OF THE INFORMATION, EITHER EXPRESSED OR IMPLIED. UNAUTHORIZED ATTEMPTS TO MODIFY THE INFORMATION OR USE THE INFORMATION FOR OTHER THAN ITS INTENDED PURPOSES ARE PROHIBITED.

**MASS. LAW**  
 REQUIRES 72 HOURS ADVANCE NOTICE TO UTILITY COMPANIES  
 BEFORE DIGGING BY ANYONE. CALL DIG-SAFE 1-888-344-7233

C# 177-24	<b>NSTAR EVERSOURCE</b> ELECTRIC d/b/a 1165 MASSACHUSETTS AVE. DORCHESTER, MASS. 02125
Ward #	
Work Order # 16205080	Plan of HARTWELL ROAD
Surveyed by: SJ/LM/JC	BEDFORD
Research by: GR	Showing PROPOSED MANHOLE AND CONDUIT LOCATIONS
Plotted by: SJ	
Proposed Structures: SJ	
Approved: K. RICE	Scale 1"=30' Date JULY 18, 2024
P#	SHEET 5 of 15



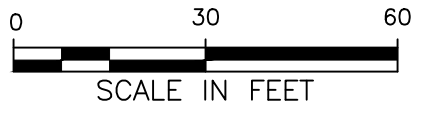
077-0001-0002  
 159-165 HARTWELL ROAD  
 N/F  
 UNITED STATES OF AMERICA-GSA  
 3 KIRKLAND AVE. BLDG 1217

077-0001-001  
 154 HARTWELL ROAD  
 N/F  
 RUNWAY REALTY VENTURES LLC  
 C/O CHARLES RIVER VENTURES

082-0001  
 HANSCOM FIELD  
 N/F  
 MASSPORT AUTHORITY  
 THOMAS W ENNIS  
 ECONOMIC PLANNING & DEVELOPMENT

INSTALL CONCRETE MANHOLE  
 6.0' x 10.0' x 8.0' DEEP  
 SECTION 3, FIG. 3

INSTALL 6 - 5" PVC PIPES  
 TYPE EB IN CONCRETE  
 SECTION 2 FIG. 5



BY YOUR USE OF THE INFORMATION CONTAINED IN THIS MAP, YOU AGREE THAT NO WARRANTY OF ANY KIND, EXPRESS OR IMPLIED, IS GIVEN WITH RESPECT TO THE INFORMATION. NEITHER NSTAR ELECTRIC COMPANY, NSTAR GAS COMPANY NOR ITS PARENTS, AFFILIATES, OFFICERS, DIRECTORS, SHAREHOLDERS, EMPLOYEES OR AGENTS (COLLECTIVELY THE "NSTAR ENTITIES") SHALL BE LIABLE FOR ANY LOSS OR INJURY CAUSED IN WHOLE OR IN PART BY USE OF THIS INFORMATION OR IN RELIANCE UPON IT, TO THE MAXIMUM EXTENT ALLOWED BY LAW. YOU AGREE BY YOUR ACCEPTANCE OF THE INFORMATION TO RELEASE, INDEMNIFY AND HOLD THE NSTAR ENTITIES HARMLESS FROM ANY SUCH LOSS OR INJURY.

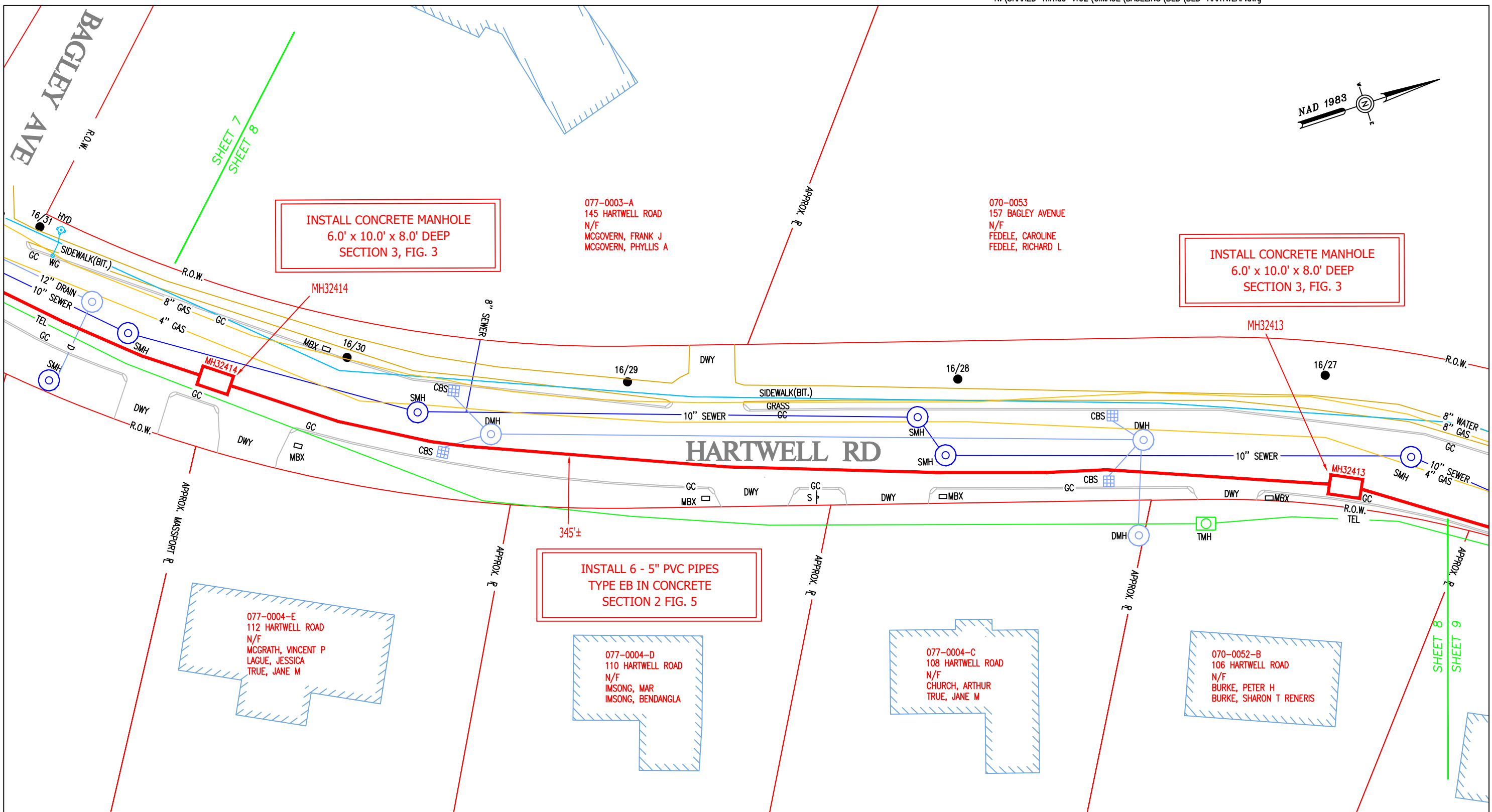
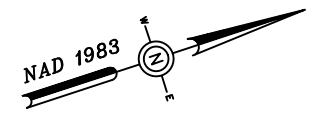
THE INFORMATION MAY NOT REPRESENT A SURVEY, MAY NOT BE THE MOST COMPLETE AND IS SUBJECT TO CHANGE WITHOUT NOTICE. NO LIABILITY IS ASSUMED FOR THE ACCURACY OF THE INFORMATION, EITHER EXPRESSED OR IMPLIED. UNAUTHORIZED ATTEMPTS TO MODIFY THE INFORMATION OR USE THE INFORMATION FOR OTHER THAN ITS INTENDED PURPOSES ARE PROHIBITED.

**MASS. LAW**  
 REQUIRES 72 HOURS ADVANCE NOTICE TO UTILITY COMPANIES  
 BEFORE DIGGING BY ANYONE. CALL DIG-SAFE 1-888-344-7233

C# 177-24
Ward #
Work Order # 16205080
Surveyed by: SJ/LM/JC
Research by: GR
Plotted by: SJ
Proposed Structures: SJ
Approved: K. RICE
P#

<b>NSTAR EVERSOURCE</b> ELECTRIC d/b/a	
1165 MASSACHUSETTS AVE. DORCHESTER, MASS. 02125	
Plan of HARTWELL ROAD BEDFORD	
Showing PROPOSED MANHOLE AND CONDUIT LOCATIONS	
Scale 1"=30'	Date JULY 18, 2024
SHEET 6 of 15	





**INSTALL CONCRETE MANHOLE**  
 6.0' x 10.0' x 8.0' DEEP  
 SECTION 3, FIG. 3

**INSTALL CONCRETE MANHOLE**  
 6.0' x 10.0' x 8.0' DEEP  
 SECTION 3, FIG. 3

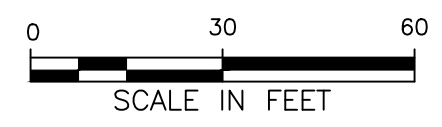
**INSTALL 6 - 5" PVC PIPES**  
 TYPE EB IN CONCRETE  
 SECTION 2 FIG. 5

077-0004-E  
 112 HARTWELL ROAD  
 N/F  
 MCGRATH, VINCENT P  
 LAGUE, JESSICA  
 TRUE, JANE M

077-0004-D  
 110 HARTWELL ROAD  
 N/F  
 IMSONG, MAR  
 IMSONG, BENDANGLA

077-0004-C  
 108 HARTWELL ROAD  
 N/F  
 CHURCH, ARTHUR  
 TRUE, JANE M

070-0052-B  
 106 HARTWELL ROAD  
 N/F  
 BURKE, PETER H  
 BURKE, SHARON T RENERIS



BY YOUR USE OF THE INFORMATION CONTAINED IN THIS MAP, YOU AGREE THAT NO WARRANTY OF ANY KIND, EXPRESS OR IMPLIED, IS GIVEN WITH RESPECT TO THE INFORMATION. NEITHER NSTAR ELECTRIC COMPANY, NSTAR GAS COMPANY NOR ITS PARENTS, AFFILIATES, OFFICERS, DIRECTORS, SHAREHOLDERS, EMPLOYEES OR AGENTS (COLLECTIVELY THE "NSTAR ENTITIES") SHALL BE LIABLE FOR ANY LOSS OR INJURY CAUSED IN WHOLE OR IN PART BY USE OF THIS INFORMATION, OR IN RELIANCE UPON IT, TO THE MAXIMUM EXTENT ALLOWED BY LAW. YOU AGREE BY YOUR ACCEPTANCE OF THE INFORMATION TO RELEASE, INDEMNIFY AND HOLD THE NSTAR ENTITIES HARMLESS FROM ANY SUCH LOSS OR INJURY.

THE INFORMATION MAY NOT REPRESENT A SURVEY, MAY NOT BE THE MOST COMPLETE AND IS SUBJECT TO CHANGE WITHOUT NOTICE. NO LIABILITY IS ASSUMED FOR THE ACCURACY OF THE INFORMATION, EITHER EXPRESSED OR IMPLIED. UNAUTHORIZED ATTEMPTS TO MODIFY THE INFORMATION OR USE THE INFORMATION FOR OTHER THAN ITS INTENDED PURPOSES ARE PROHIBITED.

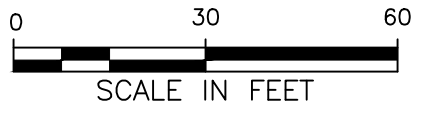
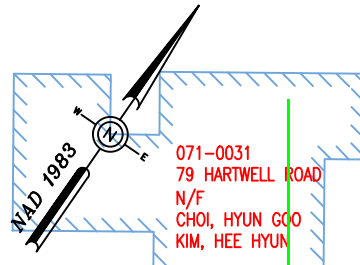
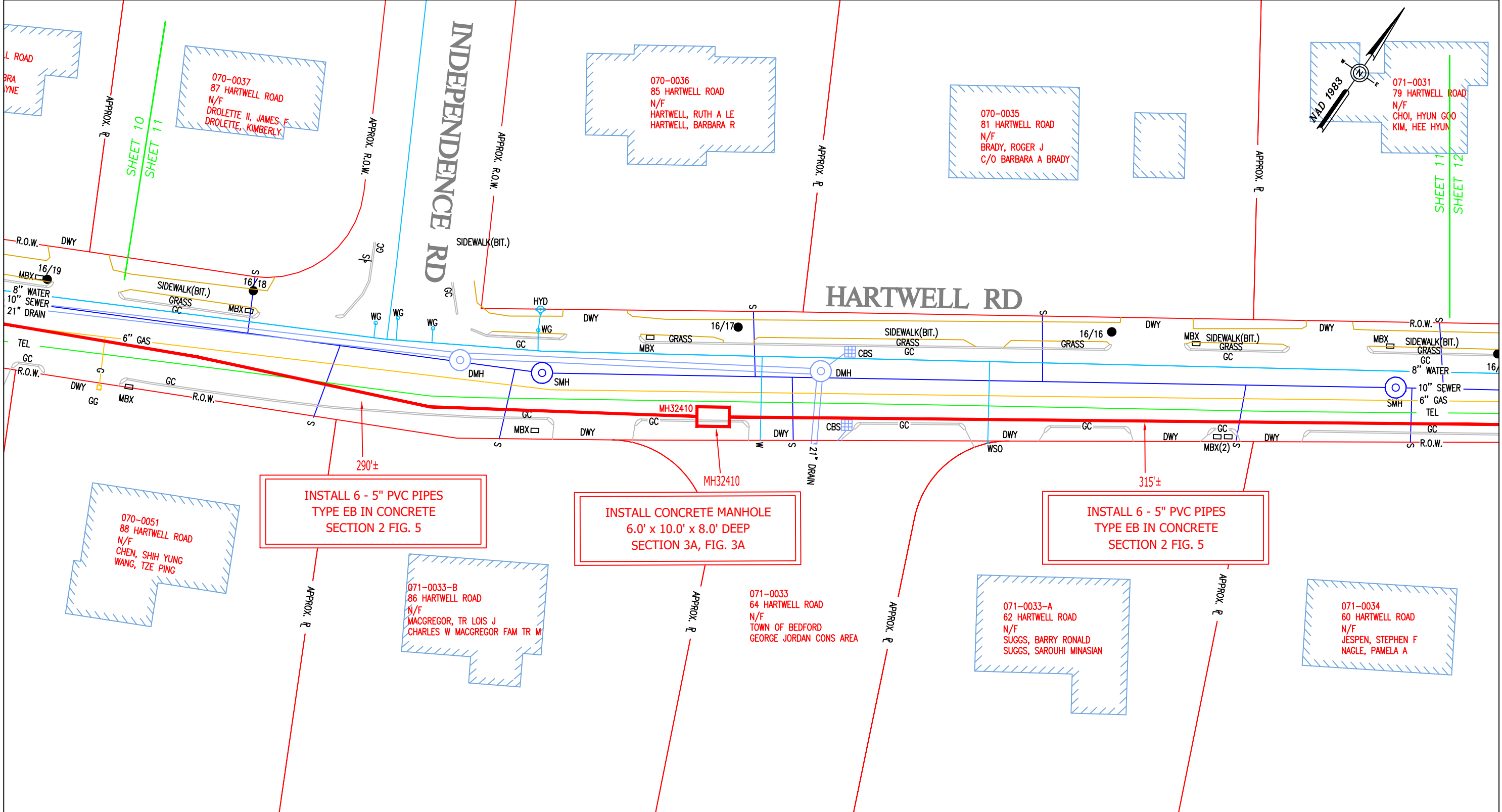
**MASS. LAW**  
 REQUIRES 72 HOURS ADVANCE NOTICE TO UTILITY COMPANIES  
 BEFORE DIGGING BY ANYONE. CALL DIG-SAFE 1-888-344-7233

C# 177-24
Ward #
Work Order # 16205080
Surveyed by: SJ/LM/JC
Research by: GR
Plotted by: SJ
Proposed Structures:
Approved: K. RICE
P#

<b>NSTAR EVERSOURCE</b> ELECTRIC d/b/a 1165 MASSACHUSETTS AVE. DORCHESTER, MASS. 02125	
Plan of HARTWELL ROAD BEDFORD	
Showing PROPOSED MANHOLE AND CONDUIT LOCATIONS	
Scale 1"=30'	Date JULY 18, 2024
SHEET 8 of 15	







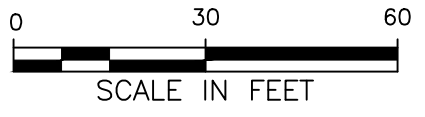
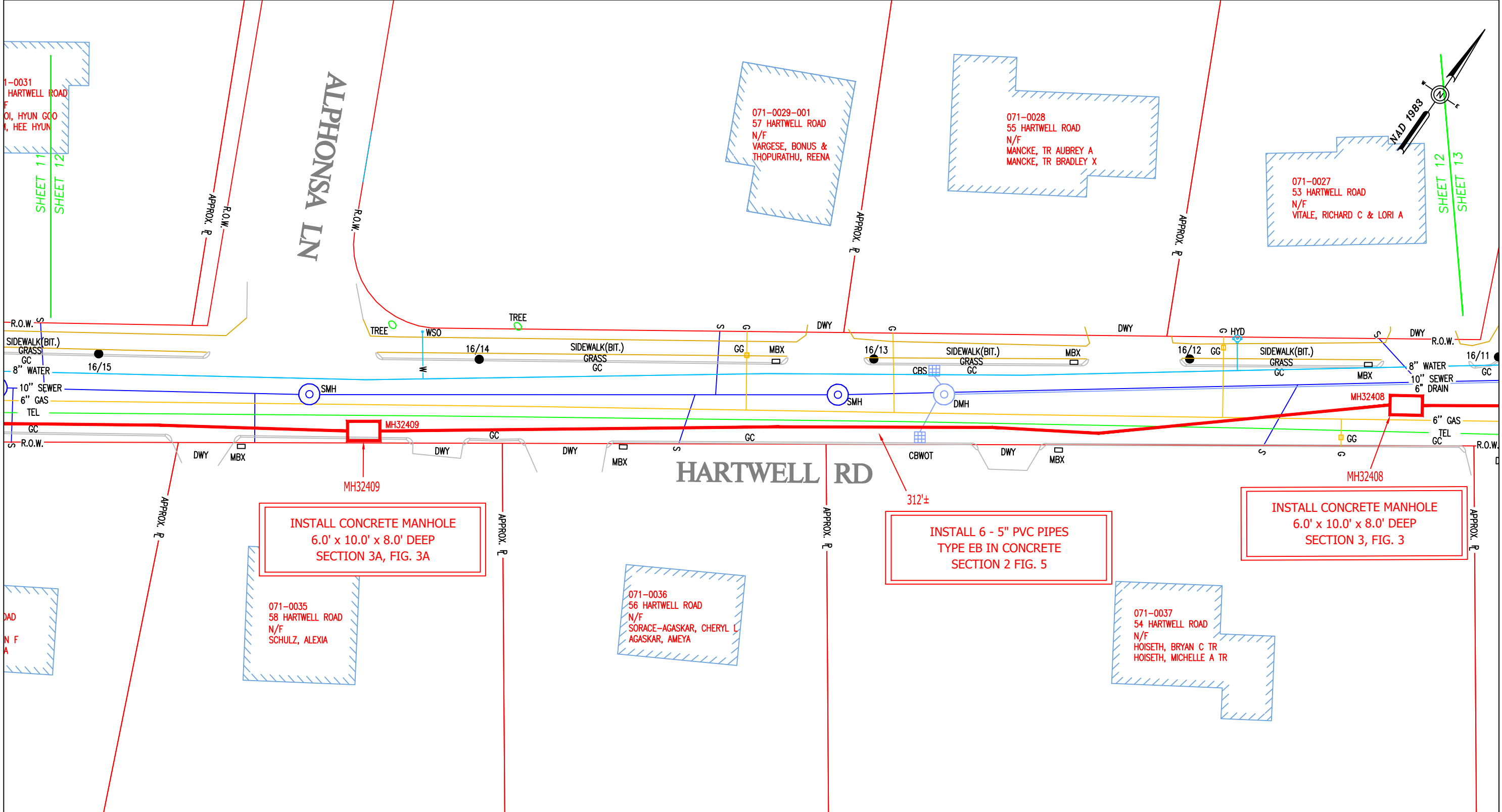
BY YOUR USE OF THE INFORMATION CONTAINED IN THIS MAP, YOU AGREE THAT NO WARRANTY OF ANY KIND, EXPRESS OR IMPLIED, IS GIVEN WITH RESPECT TO THE INFORMATION. NEITHER NSTAR ELECTRIC COMPANY, NSTAR GAS COMPANY NOR ITS PARENTS, AFFILIATES, OFFICERS, DIRECTORS, SHAREHOLDERS, EMPLOYEES OR AGENTS (COLLECTIVELY THE "NSTAR ENTITIES") SHALL BE LIABLE FOR ANY LOSS OR INJURY CAUSED IN WHOLE OR IN PART BY USE OF THIS INFORMATION OR IN RELIANCE UPON IT, TO THE MAXIMUM EXTENT ALLOWED BY LAW. YOU AGREE BY YOUR ACCEPTANCE OF THE INFORMATION TO RELEASE, INDEMNIFY AND HOLD THE NSTAR ENTITIES HARMLESS FROM ANY SUCH LOSS OR INJURY.

THE INFORMATION MAY NOT REPRESENT A SURVEY, MAY NOT BE THE MOST COMPLETE AND IS SUBJECT TO CHANGE WITHOUT NOTICE. NO LIABILITY IS ASSUMED FOR THE ACCURACY OF THE INFORMATION, EITHER EXPRESSED OR IMPLIED. UNAUTHORIZED ATTEMPTS TO MODIFY THE INFORMATION OR USE THE INFORMATION FOR OTHER THAN ITS INTENDED PURPOSES ARE PROHIBITED.

**MASS. LAW**  
 REQUIRES 72 HOURS ADVANCE NOTICE TO UTILITY COMPANIES  
 BEFORE DIGGING BY ANYONE. CALL DIG-SAFE 1-888-344-7233

C# 177-24
Ward #
Work Order # 16205080
Surveyed by: SJ/LM/JC
Research by: GR
Plotted by: SJ
Proposed Structures: SJ
Approved: K. RICE
P#

<b>NSTAR EVERSOURCE</b> ELECTRIC d/b/a 1165 MASSACHUSETTS AVE. DORCHESTER, MASS. 02125	
Plan of HARTWELL ROAD BEDFORD	
Showing PROPOSED MANHOLE AND CONDUIT LOCATIONS	
Scale 1"=30'	Date JULY 18, 2024
SHEET 11 of 15	



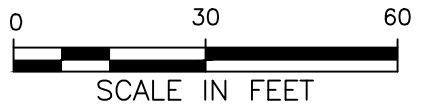
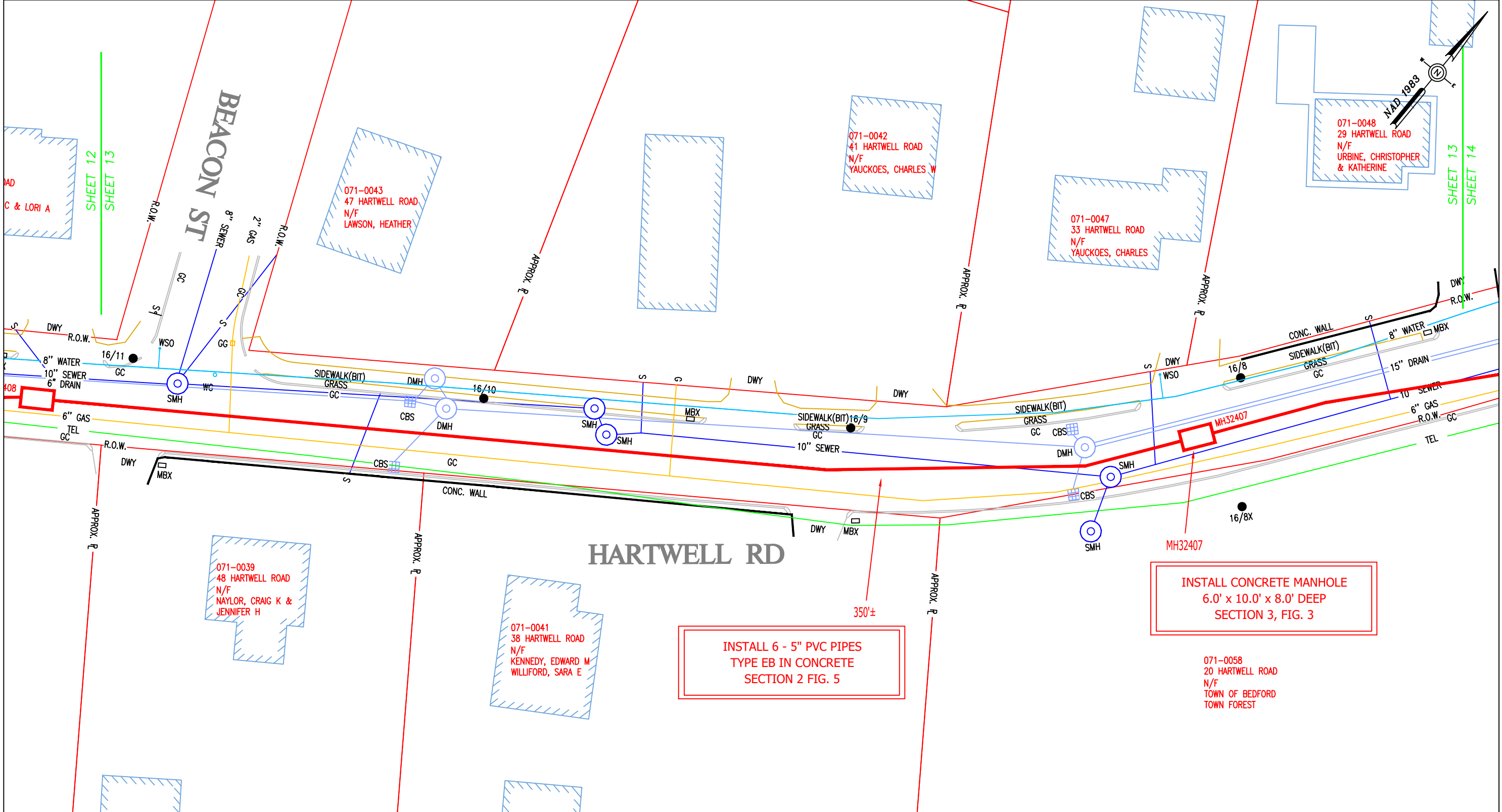
BY YOUR USE OF THE INFORMATION CONTAINED IN THIS MAP, YOU AGREE THAT NO WARRANTY OF ANY KIND, EXPRESS OR IMPLIED, IS GIVEN WITH RESPECT TO THE INFORMATION. NEITHER NSTAR ELECTRIC COMPANY, NSTAR GAS COMPANY NOR ITS PARENTS, AFFILIATES, OFFICERS, DIRECTORS, SHAREHOLDERS, EMPLOYEES OR AGENTS (COLLECTIVELY THE "NSTAR ENTITIES") SHALL BE LIABLE FOR ANY LOSS OR INJURY CAUSED IN WHOLE OR IN PART BY USE OF THIS INFORMATION, OR IN RELIANCE UPON IT, TO THE MAXIMUM EXTENT ALLOWED BY LAW. YOU AGREE BY YOUR ACCEPTANCE OF THE INFORMATION TO RELEASE, INDEMNIFY AND HOLD THE NSTAR ENTITIES HARMLESS FROM ANY SUCH LOSS OR INJURY.

THE INFORMATION MAY NOT REPRESENT A SURVEY, MAY NOT BE THE MOST COMPLETE AND IS SUBJECT TO CHANGE WITHOUT NOTICE. NO LIABILITY IS ASSUMED FOR THE ACCURACY OF THE INFORMATION, EITHER EXPRESSED OR IMPLIED. UNAUTHORIZED ATTEMPTS TO MODIFY THE INFORMATION OR USE THE INFORMATION FOR OTHER THAN ITS INTENDED PURPOSES ARE PROHIBITED.

**MASS. LAW**  
REQUIRES 72 HOURS ADVANCE NOTICE TO UTILITY COMPANIES BEFORE DIGGING BY ANYONE. CALL DIG-SAFE 1-888-344-7233

C# 177-24
Ward #
Work Order # 16205080
Surveyed by: SJ/LM/JC
Research by: GR
Plotted by: SJ
Proposed Structures: SJ
Approved: K. RICE
P#

<b>NSTAR EVERSOURCE</b> ELECTRIC d/b/a 1165 MASSACHUSETTS AVE. DORCHESTER, MASS. 02125	
Plan of HARTWELL ROAD BEDFORD	
Showing PROPOSED MANHOLE AND CONDUIT LOCATIONS	
Scale 1"=30'	Date JULY 18, 2024
SHEET 12 of 15	



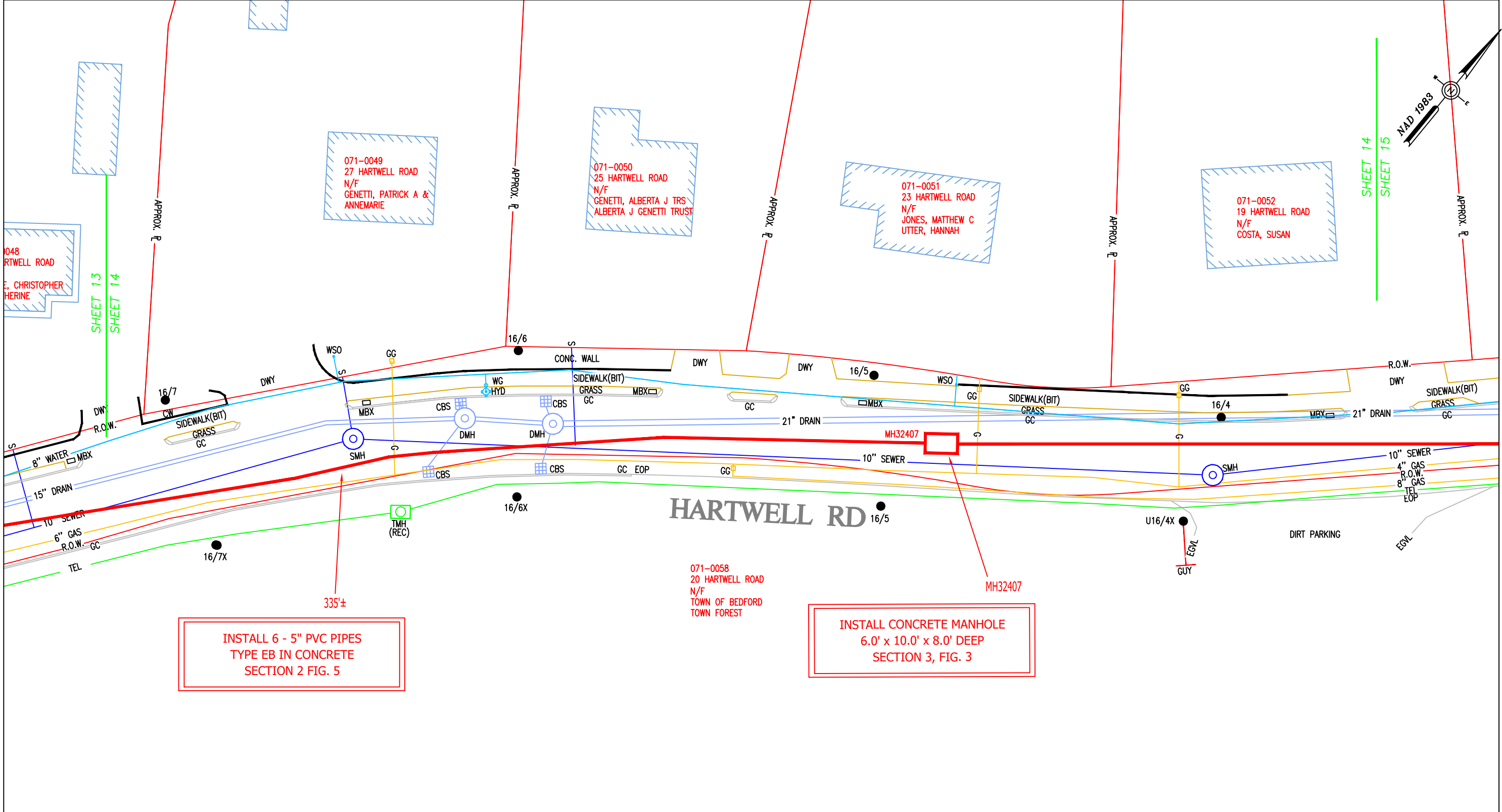
BY YOUR USE OF THE INFORMATION CONTAINED IN THIS MAP, YOU AGREE THAT NO WARRANTY OF ANY KIND, EXPRESS OR IMPLIED, IS GIVEN WITH RESPECT TO THE INFORMATION. NEITHER NSTAR ELECTRIC COMPANY, NSTAR GAS COMPANY NOR ITS PARENTS, AFFILIATES, OFFICERS, DIRECTORS, SHAREHOLDERS, EMPLOYEES OR AGENTS (COLLECTIVELY THE "NSTAR ENTITIES") SHALL BE LIABLE FOR ANY LOSS OR INJURY CAUSED IN WHOLE OR IN PART BY USE OF THIS INFORMATION, OR IN RELIANCE UPON IT, TO THE MAXIMUM EXTENT ALLOWED BY LAW. YOU AGREE BY YOUR ACCEPTANCE OF THE INFORMATION TO RELEASE, INDEMNIFY AND HOLD THE NSTAR ENTITIES HARMLESS FROM ANY SUCH LOSS OR INJURY.

THE INFORMATION MAY NOT REPRESENT A SURVEY, MAY NOT BE THE MOST COMPLETE AND IS SUBJECT TO CHANGE WITHOUT NOTICE. NO LIABILITY IS ASSUMED FOR THE ACCURACY OF THE INFORMATION, EITHER EXPRESSED OR IMPLIED. UNAUTHORIZED ATTEMPTS TO MODIFY THE INFORMATION OR USE THE INFORMATION FOR OTHER THAN ITS INTENDED PURPOSES ARE PROHIBITED.

**MASS. LAW**  
REQUIRES 72 HOURS ADVANCE NOTICE TO UTILITY COMPANIES BEFORE DIGGING BY ANYONE. CALL DIG-SAFE 1-888-344-7233

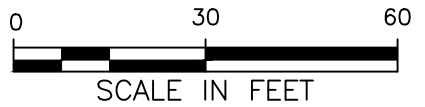
C# 177-24
Ward #
Work Order # 16205080
Surveyed by: SJ/LM/JC
Research by: GR
Plotted by: SJ
Proposed Structures: SJ
Approved: K. RICE
P#

<b>NSTAR EVERSOURCE</b> ELECTRIC d/b/a 1165 MASSACHUSETTS AVE. DORCHESTER, MASS. 02125	
Plan of HARTWELL ROAD BEDFORD	
Showing PROPOSED MANHOLE AND CONDUIT LOCATIONS	
Scale 1"=30'	Date JULY 18, 2024
SHEET 13 of 15	



INSTALL 6 - 5" PVC PIPES  
TYPE EB IN CONCRETE  
SECTION 2 FIG. 5

INSTALL CONCRETE MANHOLE  
6.0' x 10.0' x 8.0' DEEP  
SECTION 3, FIG. 3



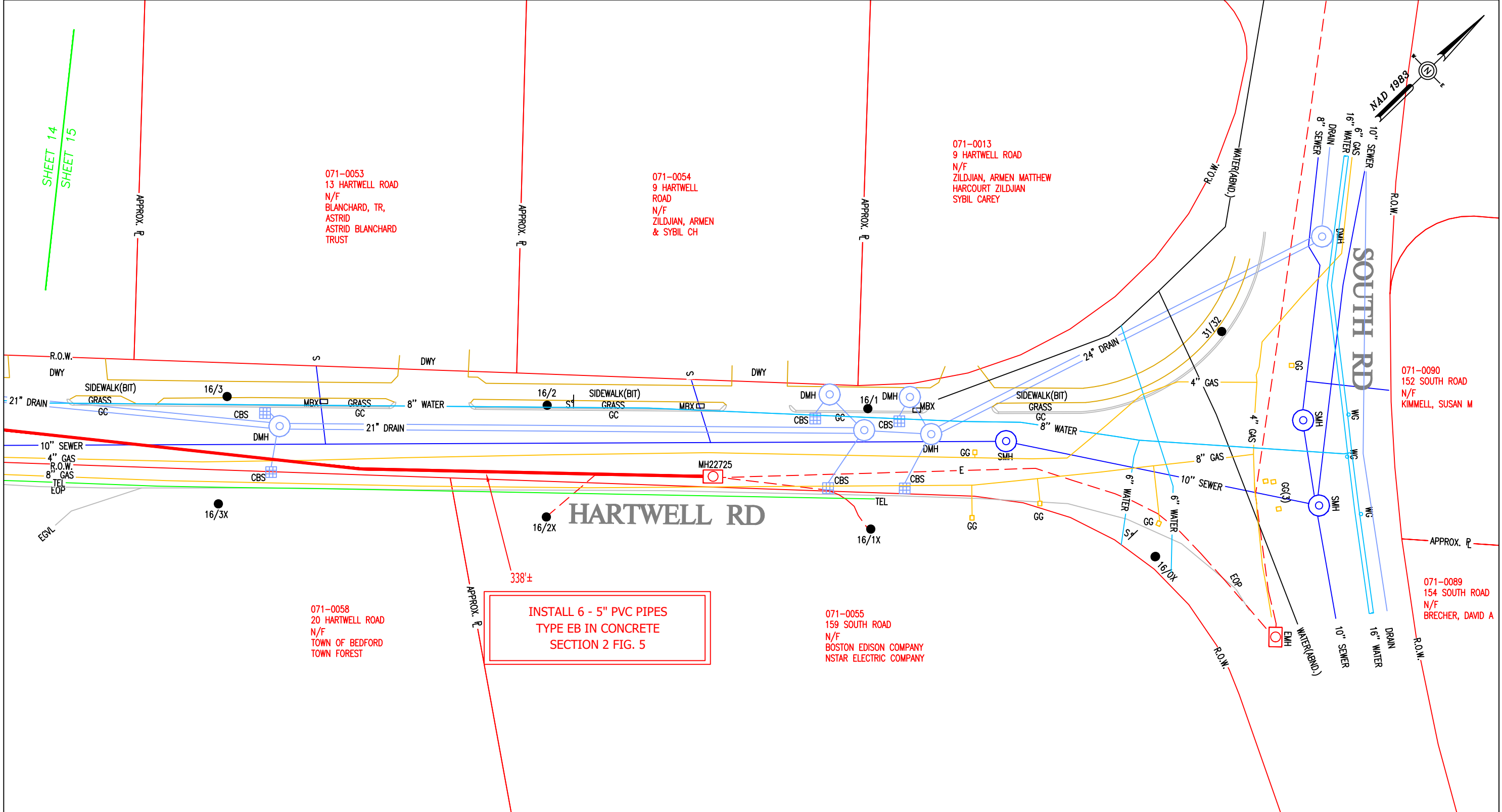
BY YOUR USE OF THE INFORMATION CONTAINED IN THIS MAP, YOU AGREE THAT NO WARRANTY OF ANY KIND, EXPRESS OR IMPLIED, IS GIVEN WITH RESPECT TO THE INFORMATION. NEITHER NSTAR ELECTRIC COMPANY, NSTAR GAS COMPANY NOR ITS PARENTS, AFFILIATES, OFFICERS, DIRECTORS, SHAREHOLDERS, EMPLOYEES OR AGENTS (COLLECTIVELY THE "NSTAR ENTITIES") SHALL BE LIABLE FOR ANY LOSS OR INJURY CAUSED IN WHOLE OR IN PART BY USE OF THIS INFORMATION, OR IN RELIANCE UPON IT, TO THE MAXIMUM EXTENT ALLOWED BY LAW. YOU AGREE BY YOUR ACCEPTANCE OF THE INFORMATION TO RELEASE, INDEMNIFY AND HOLD THE NSTAR ENTITIES HARMLESS FROM ANY SUCH LOSS OR INJURY.

THE INFORMATION MAY NOT REPRESENT A SURVEY, MAY NOT BE THE MOST COMPLETE AND IS SUBJECT TO CHANGE WITHOUT NOTICE. NO LIABILITY IS ASSUMED FOR THE ACCURACY OF THE INFORMATION, EITHER EXPRESSED OR IMPLIED. UNAUTHORIZED ATTEMPTS TO MODIFY THE INFORMATION OR USE THE INFORMATION FOR OTHER THAN ITS INTENDED PURPOSES ARE PROHIBITED.

**MASS. LAW**  
REQUIRES 72 HOURS ADVANCE NOTICE TO UTILITY COMPANIES  
BEFORE DIGGING BY ANYONE. CALL DIG-SAFE 1-888-344-7233

C# 177-24
Ward #
Work Order # 16205080
Surveyed by: SJ/LM/JC
Research by: GR
Plotted by: SJ
Proposed Structures: SJ
Approved: K. RICE
P#

<b>NSTAR EVERSOURCE</b> ELECTRIC d/b/a 1165 MASSACHUSETTS AVE. DORCHESTER, MASS. 02125	
Plan of HARTWELL ROAD BEDFORD	
Showing PROPOSED MANHOLE AND CONDUIT LOCATIONS	
Scale 1"=30'	Date JULY 18, 2024
SHEET 14 of 15	



SHEET 14  
SHEET 15

071-0053  
13 HARTWELL ROAD  
N/F  
BLANCHARD, TR,  
ASTRID  
ASTRID BLANCHARD  
TRUST

071-0054  
9 HARTWELL  
ROAD  
N/F  
ZILDJIAN, ARMEN  
& SYBIL CH

071-0013  
9 HARTWELL ROAD  
N/F  
ZILDJIAN, ARMEN MATTHEW  
HARCOURT ZILDJIAN  
SYBIL CAREY

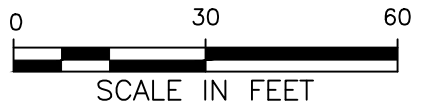
071-0090  
152 SOUTH ROAD  
N/F  
KIMMELL, SUSAN M

071-0089  
154 SOUTH ROAD  
N/F  
BRECHER, DAVID A

071-0058  
20 HARTWELL ROAD  
N/F  
TOWN OF BEDFORD  
TOWN FOREST

071-0055  
159 SOUTH ROAD  
N/F  
BOSTON EDISON COMPANY  
NSTAR ELECTRIC COMPANY

INSTALL 6 - 5" PVC PIPES  
TYPE EB IN CONCRETE  
SECTION 2 FIG. 5



BY YOUR USE OF THE INFORMATION CONTAINED IN THIS MAP, YOU AGREE THAT NO WARRANTY OF ANY KIND, EXPRESS OR IMPLIED, IS GIVEN WITH RESPECT TO THE INFORMATION. NEITHER NSTAR ELECTRIC COMPANY, NSTAR GAS COMPANY NOR ITS PARENTS, AFFILIATES, OFFICERS, DIRECTORS, SHAREHOLDERS, EMPLOYEES OR AGENTS (COLLECTIVELY THE "NSTAR ENTITIES") SHALL BE LIABLE FOR ANY LOSS OR INJURY CAUSED IN WHOLE OR IN PART BY USE OF THIS INFORMATION OR IN RELIANCE UPON IT, TO THE MAXIMUM EXTENT ALLOWED BY LAW. YOU AGREE BY YOUR ACCEPTANCE OF THE INFORMATION TO RELEASE, INDEMNIFY AND HOLD THE NSTAR ENTITIES HARMLESS FROM ANY SUCH LOSS OR INJURY.

THE INFORMATION MAY NOT REPRESENT A SURVEY, MAY NOT BE THE MOST COMPLETE AND IS SUBJECT TO CHANGE WITHOUT NOTICE. NO LIABILITY IS ASSUMED FOR THE ACCURACY OF THE INFORMATION, EITHER EXPRESSED OR IMPLIED. UNAUTHORIZED ATTEMPTS TO MODIFY THE INFORMATION OR USE THE INFORMATION FOR OTHER THAN ITS INTENDED PURPOSES ARE PROHIBITED.

**MASS. LAW**  
REQUIRES 72 HOURS ADVANCE NOTICE TO UTILITY COMPANIES  
BEFORE DIGGING BY ANYONE. CALL DIG-SAFE 1-888-344-7233

C# 177-24
Ward #
Work Order # 16205080
Surveyed by: SJ/LM/JC
Research by: GR
Plotted by: SJ
Proposed Structures: SJ
Approved: K. RICE
P#

<b>NSTAR EVERSOURCE</b> ELECTRIC d/b/a 1165 MASSACHUSETTS AVE. DORCHESTER, MASS. 02125	
Plan of HARTWELL ROAD BEDFORD	
Showing PROPOSED MANHOLE AND CONDUIT LOCATIONS	
Scale 1"=30'	Date JULY 18, 2024
SHEET 15 of 15	