



Minuteman Bikeway Extension Design Status

Presented by
Trish Domigan
Pete Sorensen

February 25, 2019

Minuteman Bikeway Extension

Current Status

Funding

- MassDOT approved use of state and federal funding for project in April 2014
- Project currently on the 2022 Transportation Improvement Program
- Current construction funding source:
 - Congestion Mitigation/Air Quality(CMAQ): \$6,490,000
 - Transportation Alternatives Program (TAP): \$350,000

\$6,840,000
- Anticipated Construction: Spring 2022 to Fall 2023

Design

- Project extend from Depot Park to Concord T/L (2.2 miles)
- MassDOT approved underpass at Concord Road
- 25% Design Submitted to MassDOT April 2017
- Response to Comments submitted to MassDOT Oct 2018

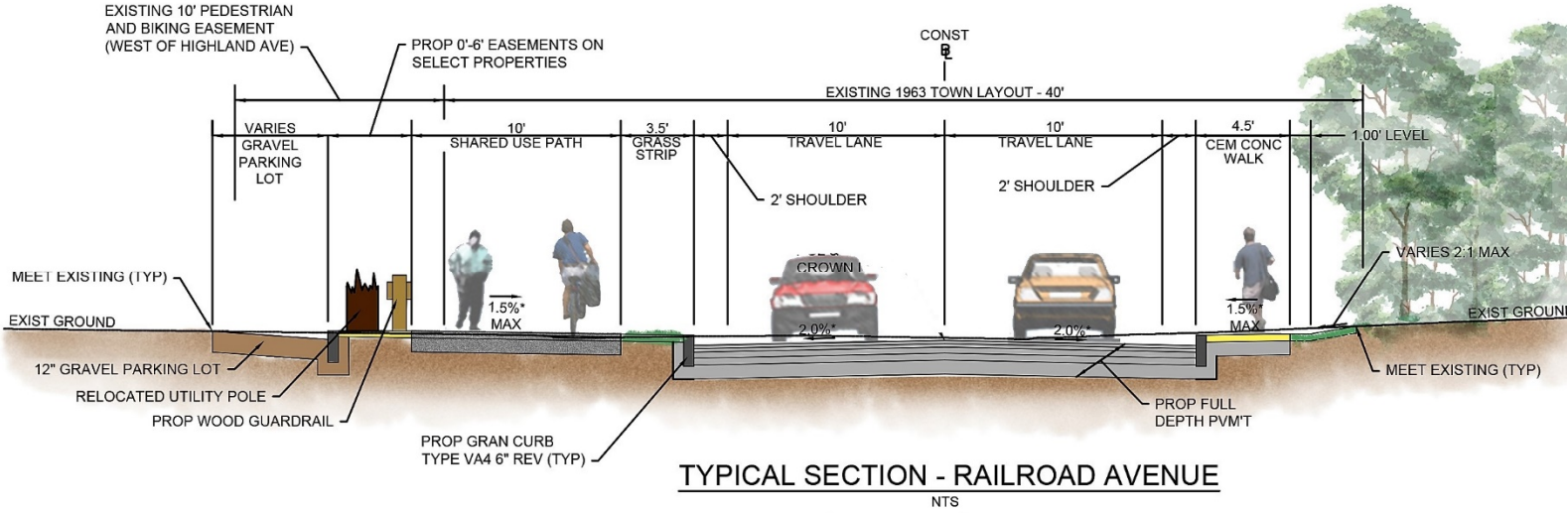
Minuteman Bikeway Extension

- Project Limits:
 - Railroad Ave: 1700 feet
 - Commercial Ave: 600 feet
 - Off road bikeway: 1.9 miles
 - Concord Road: 1200 feet



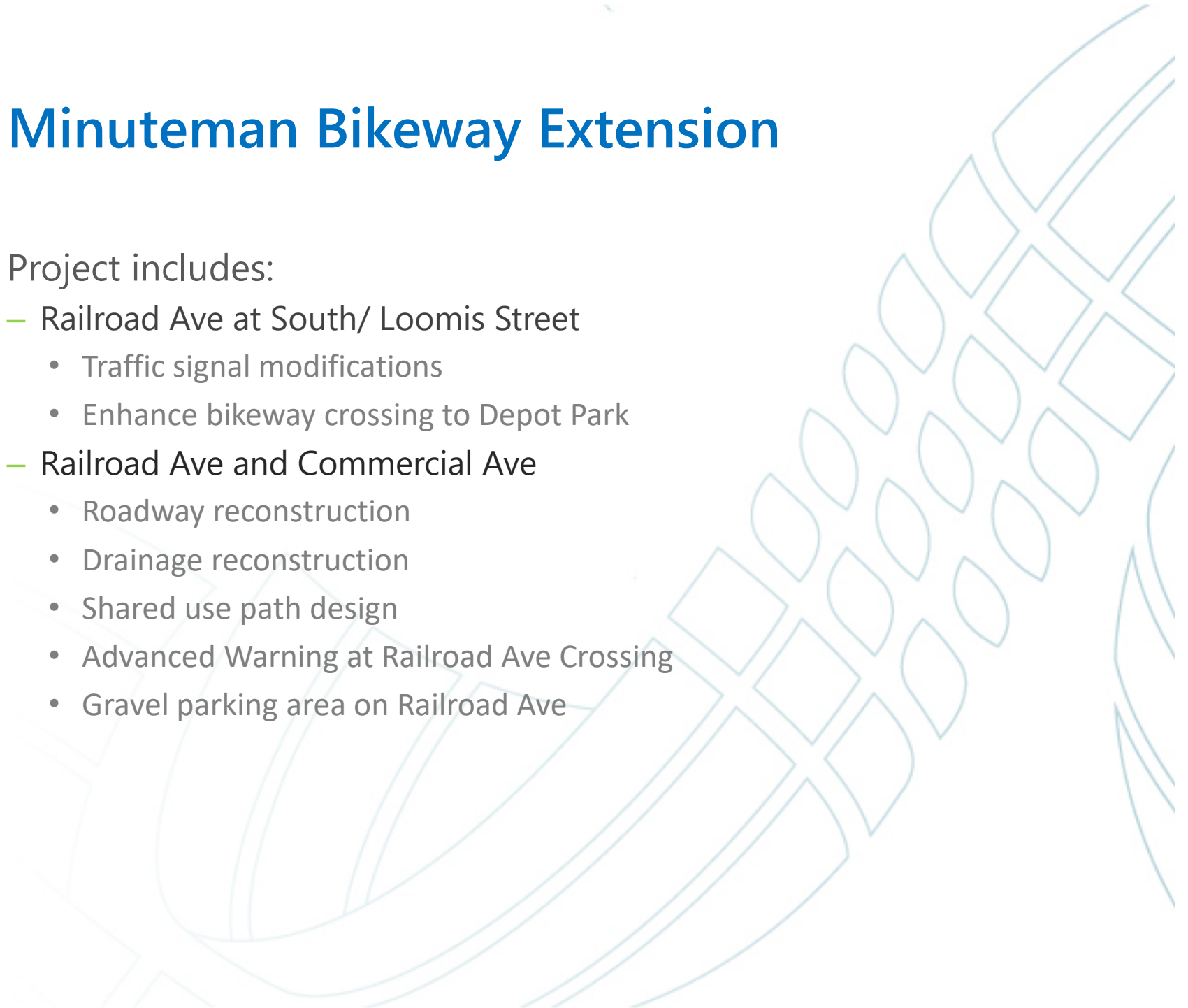
Minuteman Bikeway Cross sections –

Railroad Ave



Minuteman Bikeway Extension

- Project includes:
 - Railroad Ave at South/ Loomis Street
 - Traffic signal modifications
 - Enhance bikeway crossing to Depot Park
 - Railroad Ave and Commercial Ave
 - Roadway reconstruction
 - Drainage reconstruction
 - Shared use path design
 - Advanced Warning at Railroad Ave Crossing
 - Gravel parking area on Railroad Ave

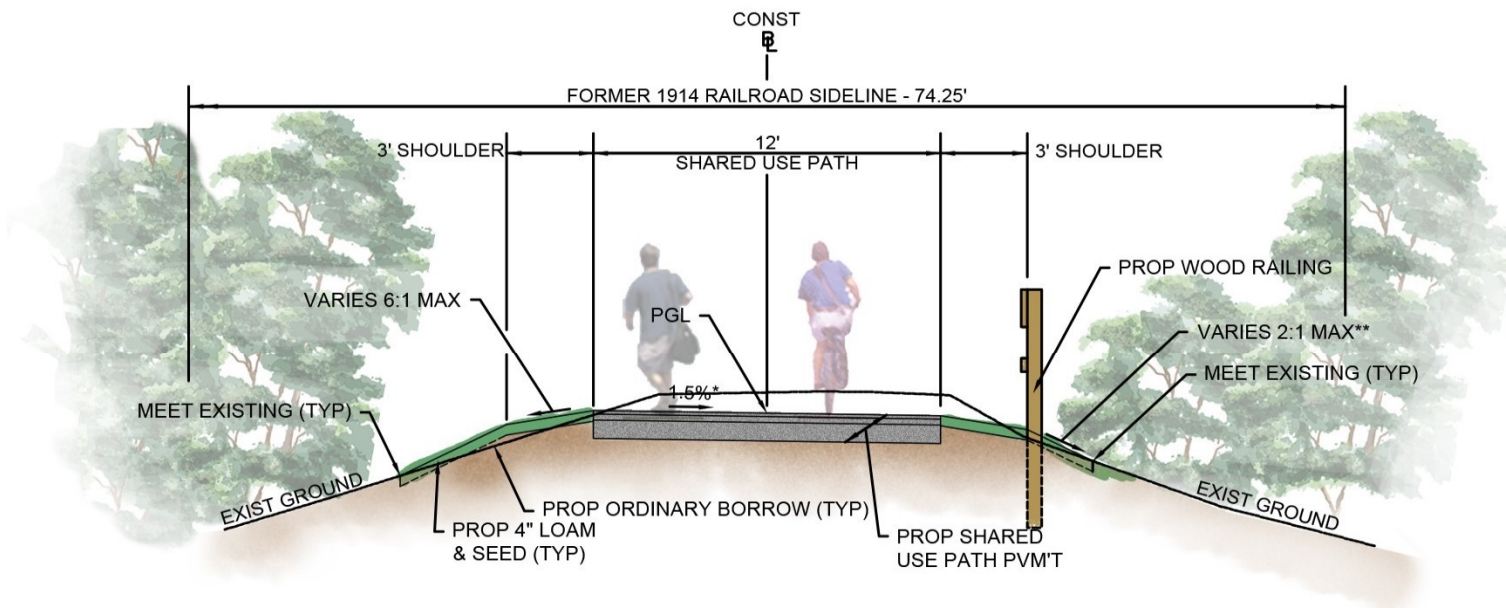


Railroad Ave Improvements



Minuteman Bikeway Cross sections –

Off road bikeway



TYPICAL SECTION - MINUTEMAN BIKEWAY EXTENSION

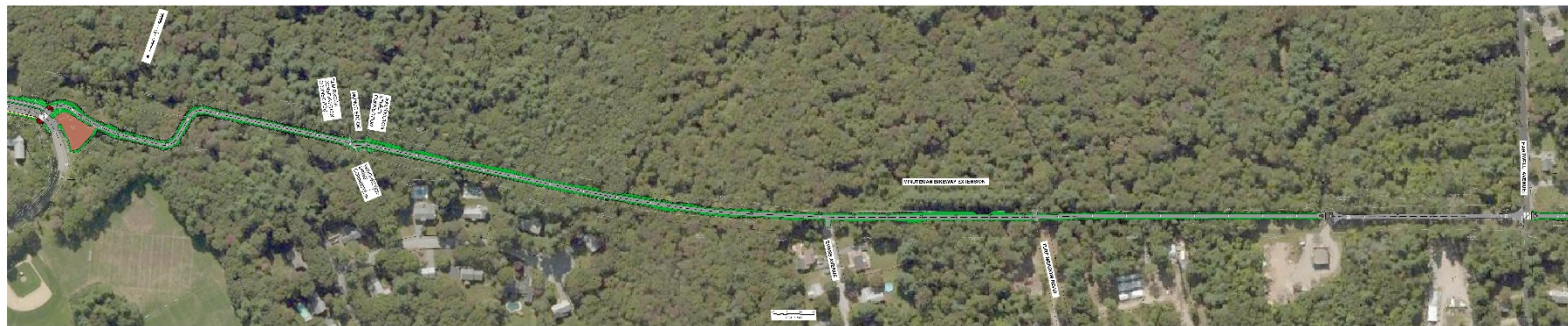
NTS

Minuteman Bikeway

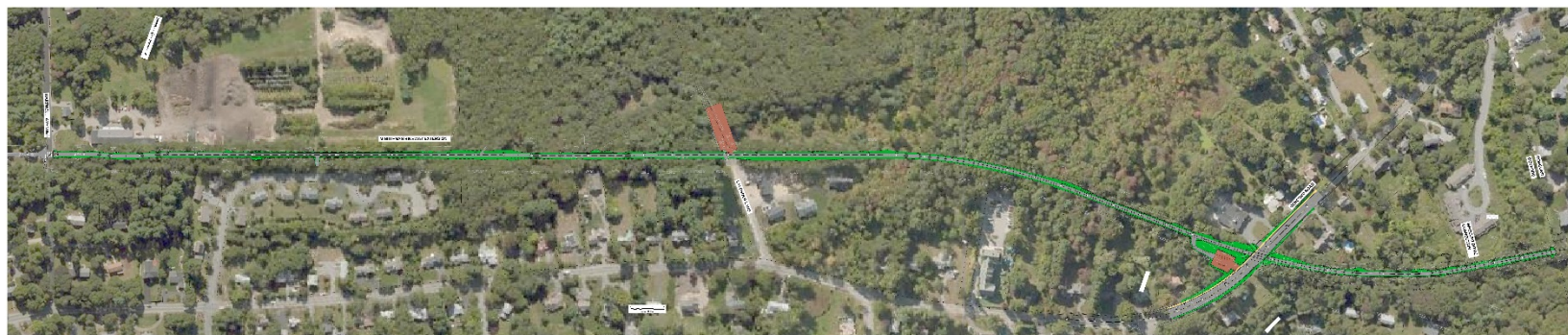
- Project Includes:
 - Off Road Bikeway
 - 12 foot wide paved bikeway
 - Parking lots at Railroad Ave, Lavender Lane and Concord Road
 - Trailheads at Railroad Ave, Concord Road and Wheeler Drive
 - Access to adjacent pathways and side streets
 - Advanced warning for crossings at Railroad Ave and Hartwell Road.
 - Proposed Bikeway underpass at Concord Road (Route 62)

Minuteman Bikeway

Railroad Ave – Hartwell Rd



Hartwell Rd – Concord Town Line



Concord Road Underpass



Minuteman Bikeway

- Next Steps

- 25% Public Hearing Spring 2019
- 75% design development – Summer 2019 to Winter 2019/2020
- Commence ROW Process - Fall 2019
- Environmental Permitting – Winter 2019/2020

Trish Domigan | pdomigan@vhb.com | 617.607.2794

Pete Sorensen | psorensen@vhb.com | 617.607.2161

www.vhb.com



Offices located throughout the east coast