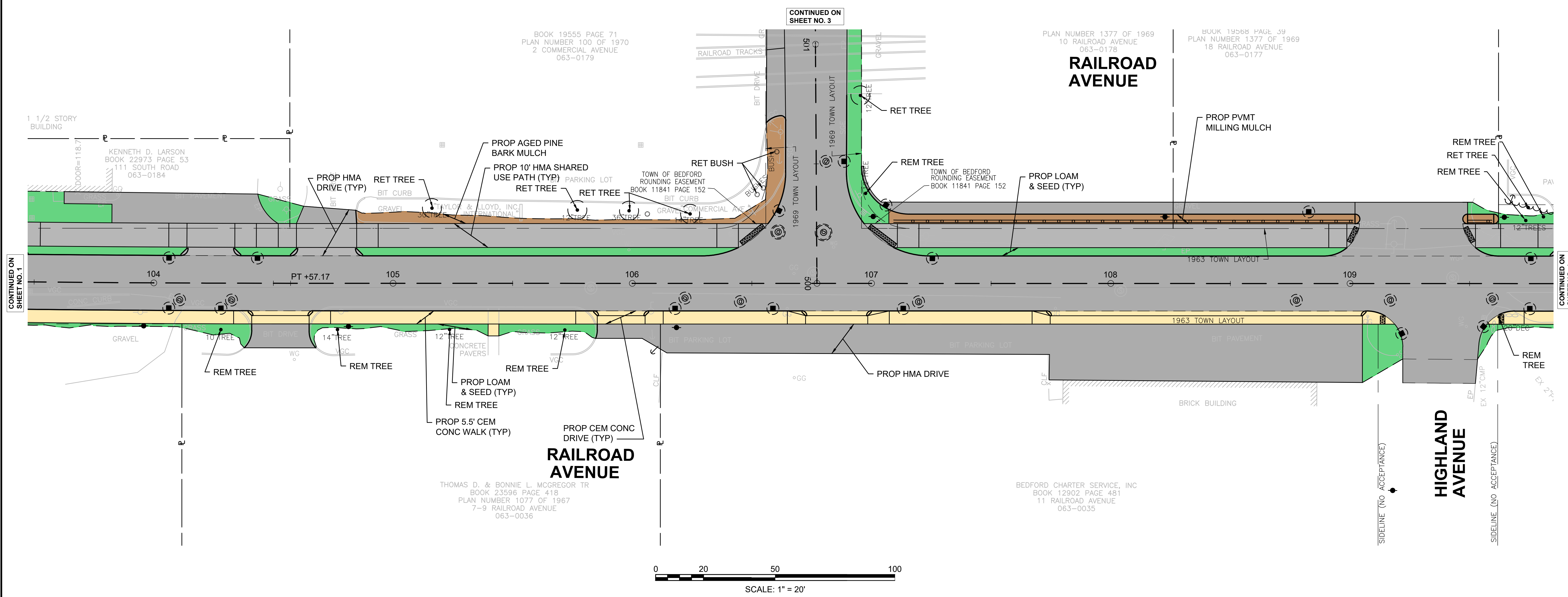


**BEDFORD  
MINUTEMAN BIKEWAY EXTENSION**

STATE	FED. AID PROJ. NO.	SHEET NO.	TOTAL SHEETS
MA	TBD	2	24
PROJECT FILE NO.		607738	

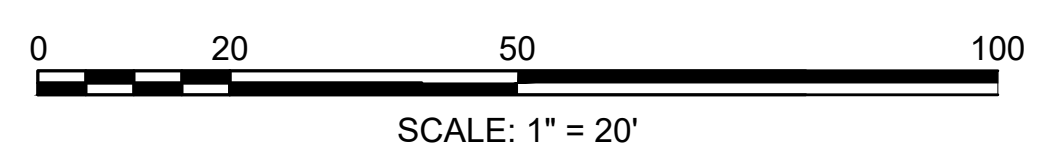
**TREE REMOVAL PLAN**

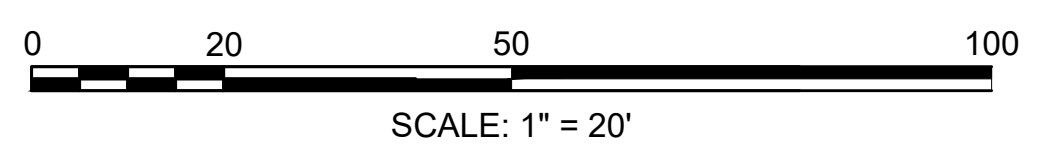
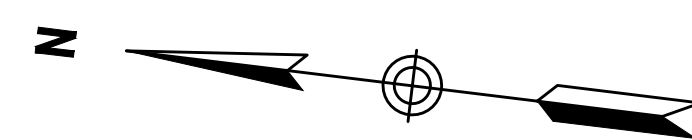
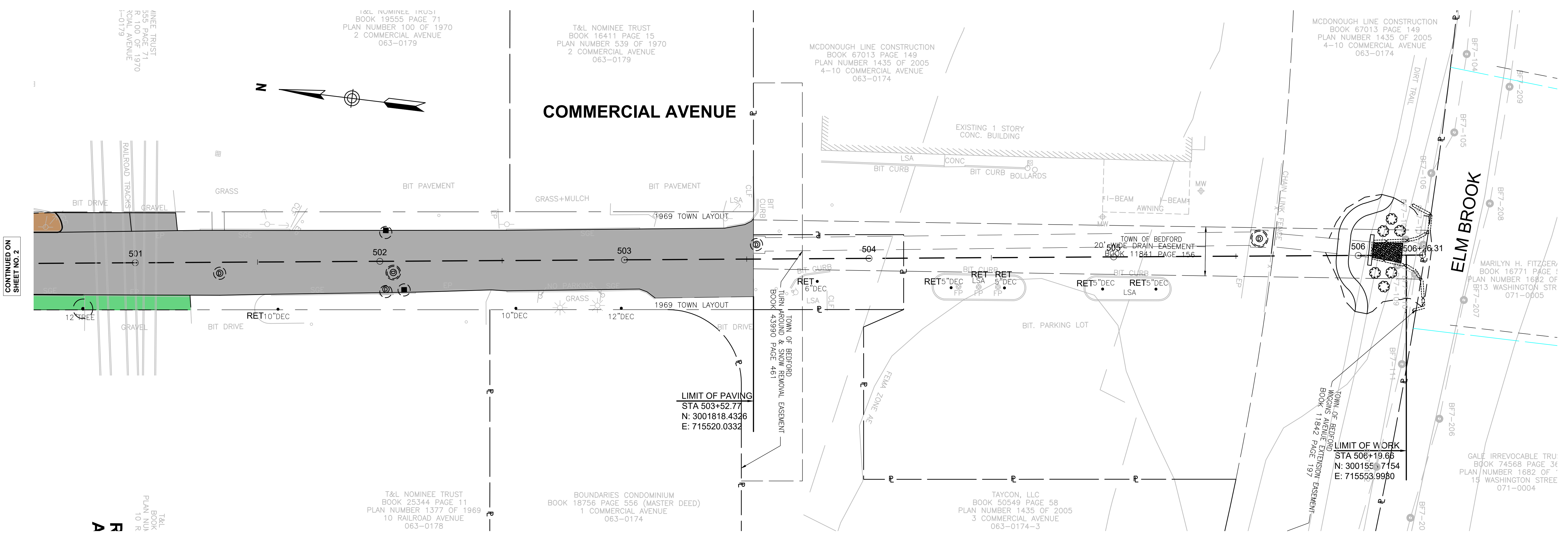


CONTINUED ON SHEET NO. 1

CONTINUED ON SHEET NO. 3

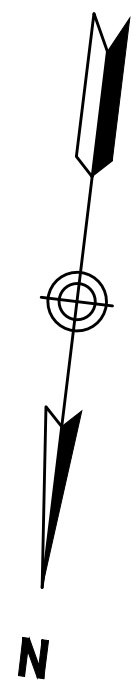
CONTINUED ON SHEET NO. 4





CONTINUED ON SHEET NO. 2

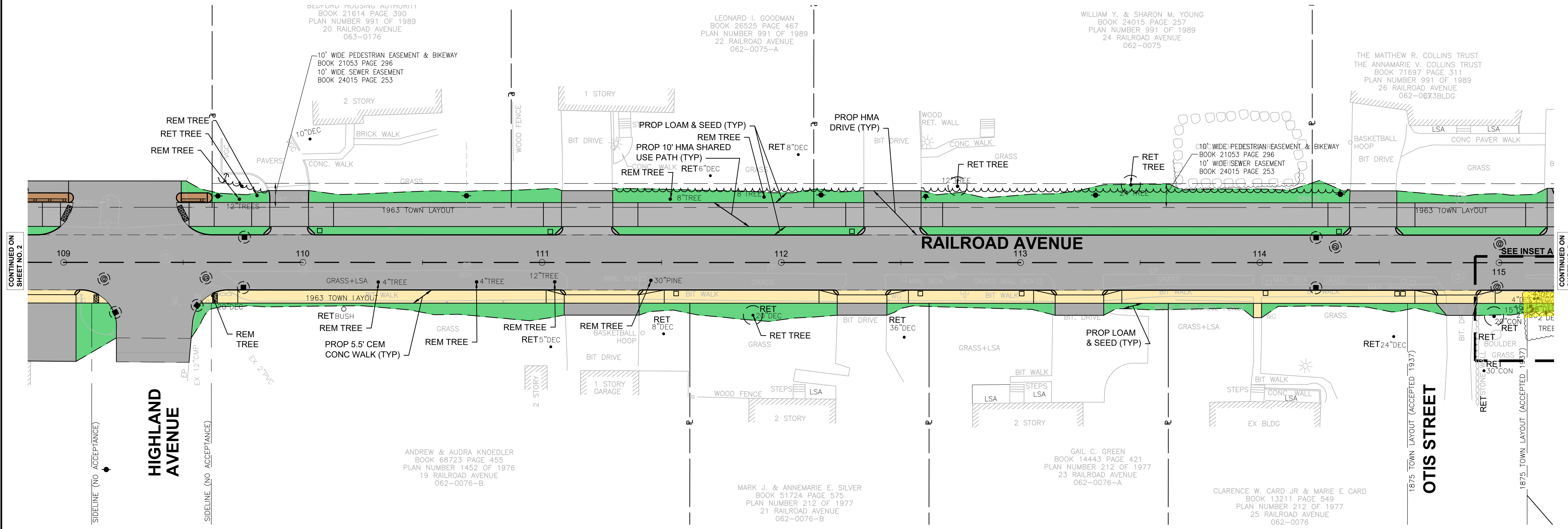
RA



**BEDFORD  
MINUTEMAN BIKEWAY EXTENSION**

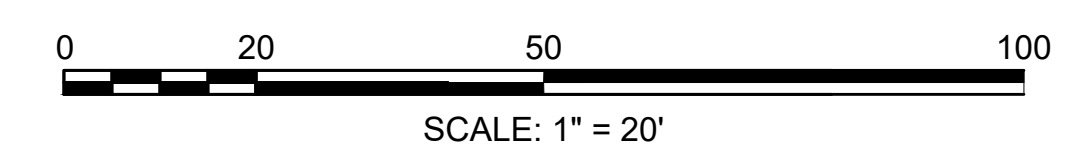
STATE	FED. AID PROJ. NO.	SHEET NO.	TOTAL SHEETS
MA	607738	4	24
PROJECT FILE NO.		607738	

**TREE REMOVAL PLAN**



CONTINUED ON SHEET NO. 2

CONTINUED ON SHEET NO. 5





**BEDFORD  
MINUTEMAN BIKEWAY EXTENSION**

STATE	FED. AID PROJ. NO.	SHEET NO.	TOTAL SHEETS
MA	TBD	6	24
PROJECT FILE NO.		607738	

**TREE REMOVAL PLAN**

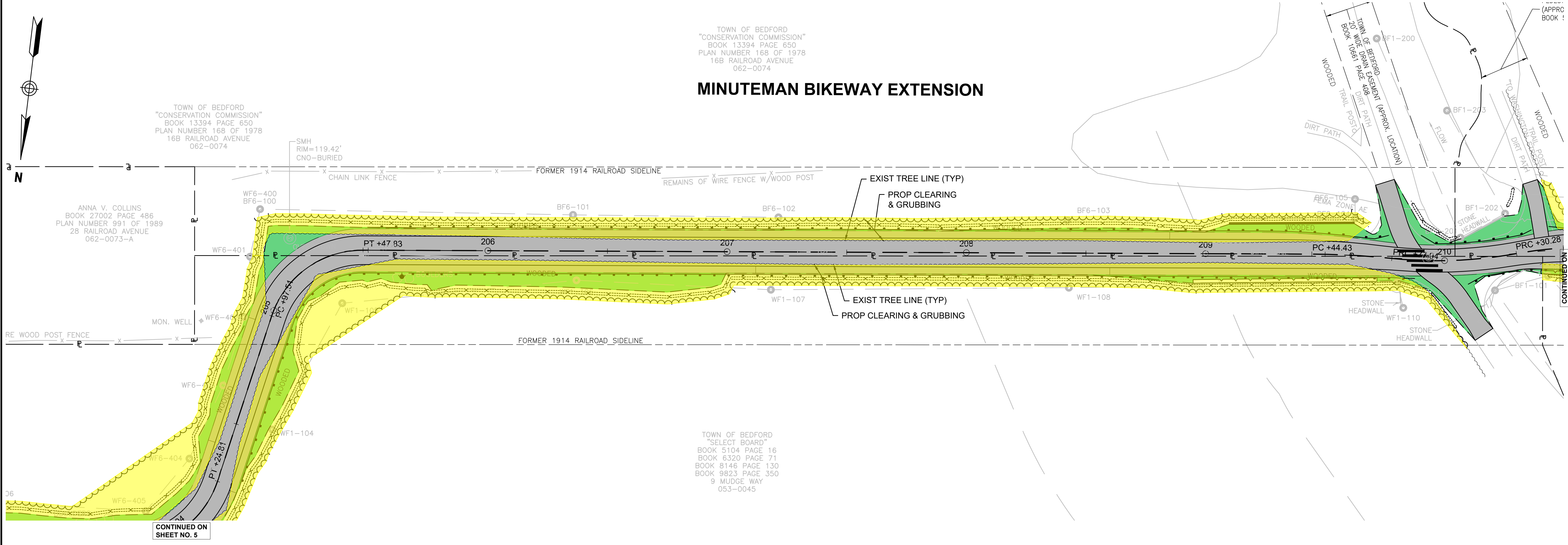
TOWN OF BEDFORD  
"CONSERVATION COMMISSION"  
BOOK 13394 PAGE 650  
PLAN NUMBER 168 OF 1978  
16B RAILROAD AVENUE  
062-0074

### MINUTEMAN BIKEWAY EXTENSION

TOWN OF BEDFORD  
"CONSERVATION COMMISSION"  
BOOK 13394 PAGE 650  
PLAN NUMBER 168 OF 1978  
16B RAILROAD AVENUE  
062-0074

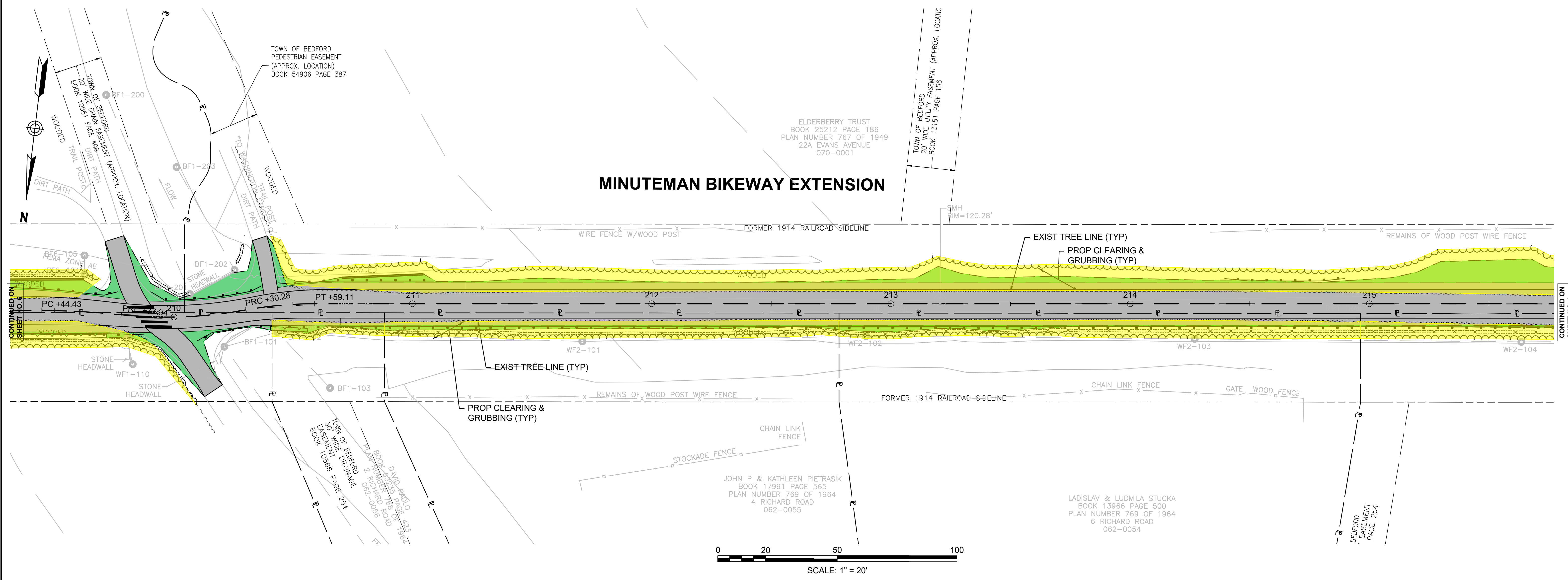
ANNA V. COLLINS  
BOOK 27002 PAGE 486  
PLAN NUMBER 991 OF 1989  
28 RAILROAD AVENUE  
062-0073-A

TOWN OF BEDFORD  
"SELECT BOARD"  
BOOK 5104 PAGE 16  
BOOK 6320 PAGE 71  
BOOK 8146 PAGE 130  
BOOK 9823 PAGE 350  
9 MUDGE WAY  
053-0045



CONTINUED ON  
SHEET NO. 5

CONTINUED ON  
SHEET NO. 7



CONTINUED ON SHEET NO. 6

CONTINUED ON SHEET NO. 8

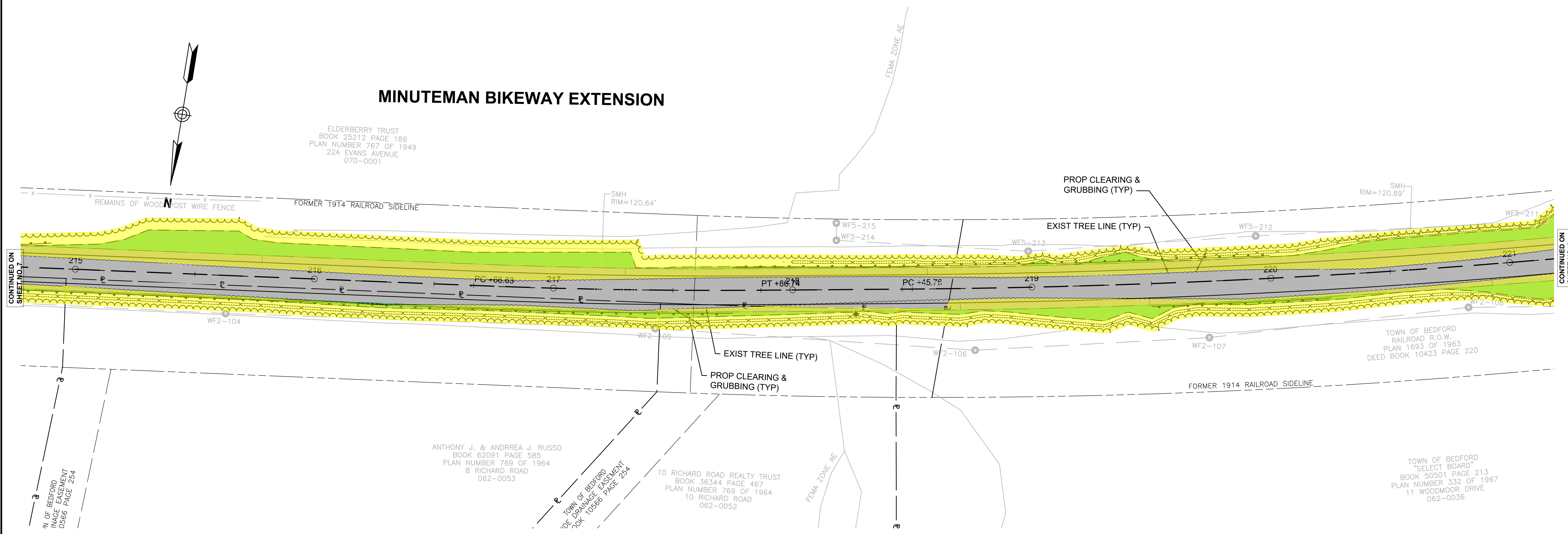
**BEDFORD  
MINUTEMAN BIKEWAY EXTENSION**

STATE	FED. AID PROJ. NO.	SHEET NO.	TOTAL SHEETS
MA	TBD	8	24
PROJECT FILE NO.		607738	

**TREE REMOVAL PLAN**

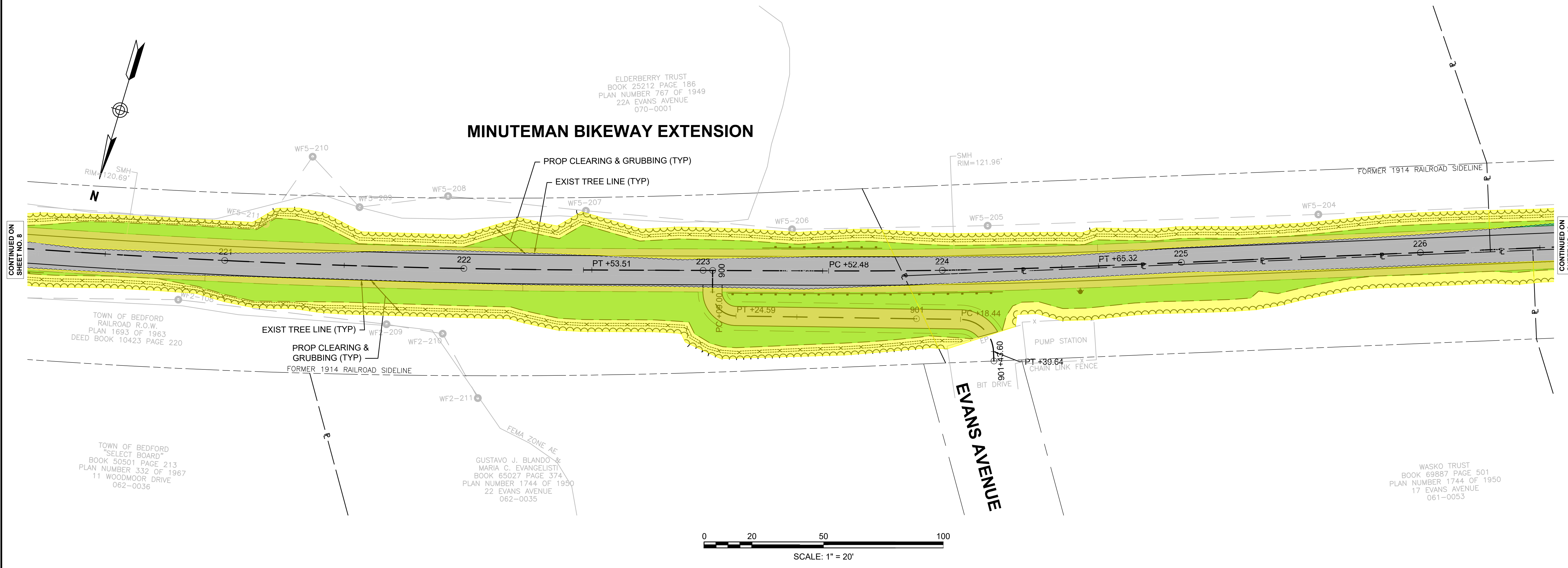
## MINUTEMAN BIKEWAY EXTENSION

ELDERBERRY TRUST  
BOOK 25212 PAGE 186  
PLAN NUMBER 767 OF 1949  
22A EVANS AVENUE  
070-0001



CONTINUED ON  
SHEET NO. 7

CONTINUED ON  
SHEET NO. 9



CONTINUED ON  
SHEET NO. 8

CONTINUED ON  
SHEET NO. 10

ELDERBERRY TRUST  
BOOK 25212 PAGE 186  
PLAN NUMBER 767 OF 1949  
22A EVANS AVENUE  
070-0001

TOWN OF BEDFORD  
RAILROAD R.O.W.  
PLAN 1993 OF 1963  
DEED BOOK 10423 PAGE 220

TOWN OF BEDFORD  
"SELECT BOARD"  
BOOK 50501 PAGE 213  
PLAN NUMBER 332 OF 1967  
11 WOODMOOR DRIVE  
062-0036

GUSTAVO J. BLANDO &  
MARIA C. EVANGELISTI  
BOOK 65027 PAGE 374  
PLAN NUMBER 1744 OF 1990  
22 EVANS AVENUE  
062-0035

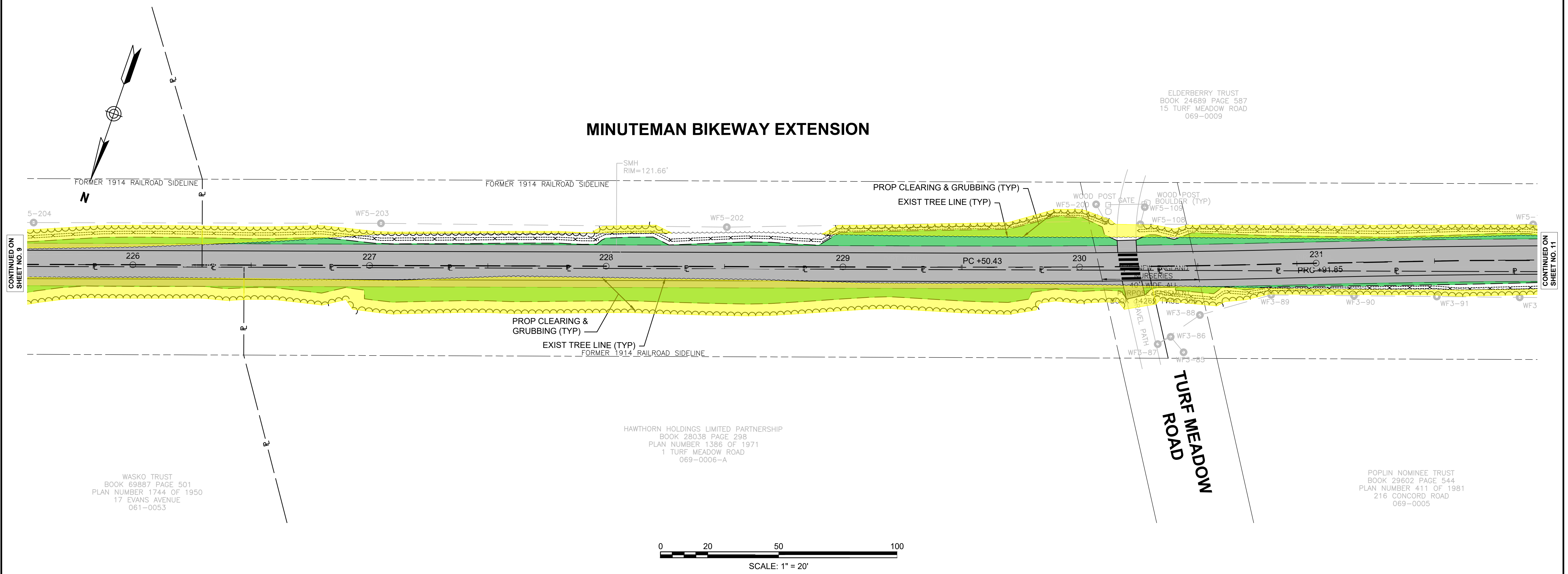
WASKO TRUST  
BOOK 69887 PAGE 501  
PLAN NUMBER 1744 OF 1950  
17 EVANS AVENUE  
061-0053

**BEDFORD  
MINUTEMAN BIKEWAY EXTENSION**

STATE	FED. AID PROJ. NO.	SHEET NO.	TOTAL SHEETS
MA	TBD	10	24
PROJECT FILE NO.		607738	

**TREE REMOVAL PLAN**

## MINUTEMAN BIKEWAY EXTENSION



**BEDFORD  
MINUTEMAN BIKEWAY EXTENSION**

STATE	FED. AID PROJ. NO.	SHEET NO.	TOTAL SHEETS
MA	TBD	10	24
PROJECT FILE NO.		607738	

**TREE REMOVAL PLAN**

## MINUTEMAN BIKEWAY EXTENSION

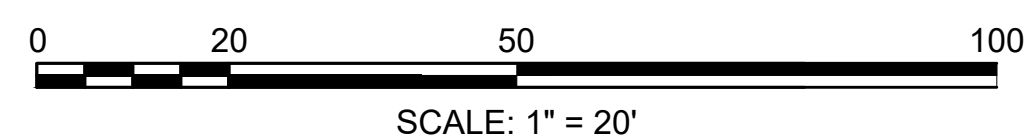
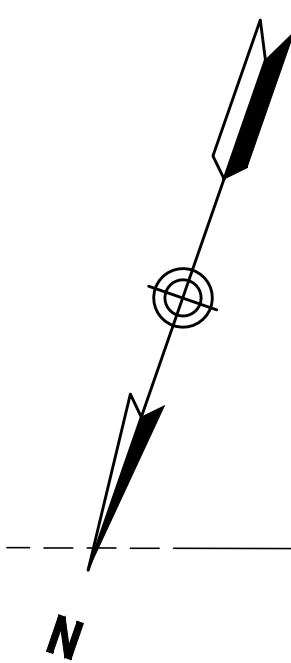
TOWN OF BEDFORD  
"SELECT BOARD"  
BOOK 14269 PAGE 299  
PLAN NUMBER 411 OF 1981  
211 HARTWELL ROAD  
069-0009-A

ELDERBERRY TRUST  
BOOK 24689 PAGE 587  
15 TURF MEADOW ROAD  
069-0009

POPLIN NOMINEE TRUST  
BOOK 29602 PAGE 544  
PLAN NUMBER 411 OF 1981  
216 CONCORD ROAD  
069-0005

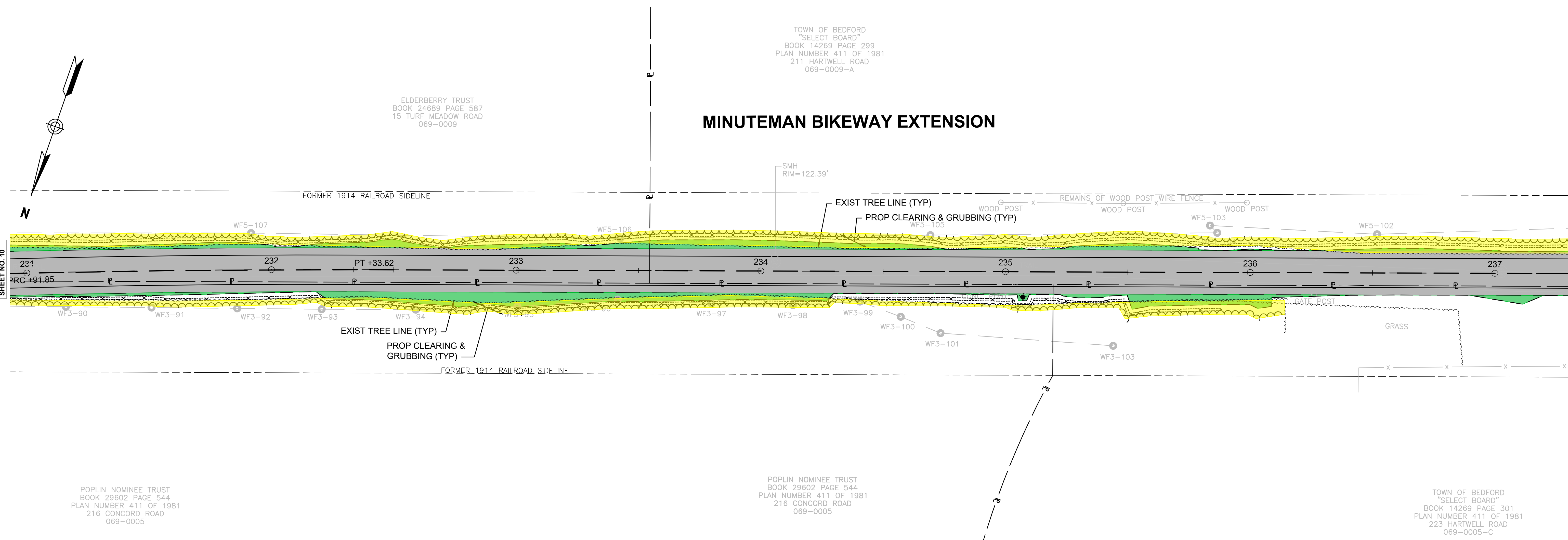
POPLIN NOMINEE TRUST  
BOOK 29602 PAGE 544  
PLAN NUMBER 411 OF 1981  
216 CONCORD ROAD  
069-0005

TOWN OF BEDFORD  
"SELECT BOARD"  
BOOK 14269 PAGE 301  
PLAN NUMBER 411 OF 1981  
223 HARTWELL ROAD  
069-0005-C



CONTINUED ON  
SHEET NO. 10

CONTINUED ON  
SHEET NO. 12

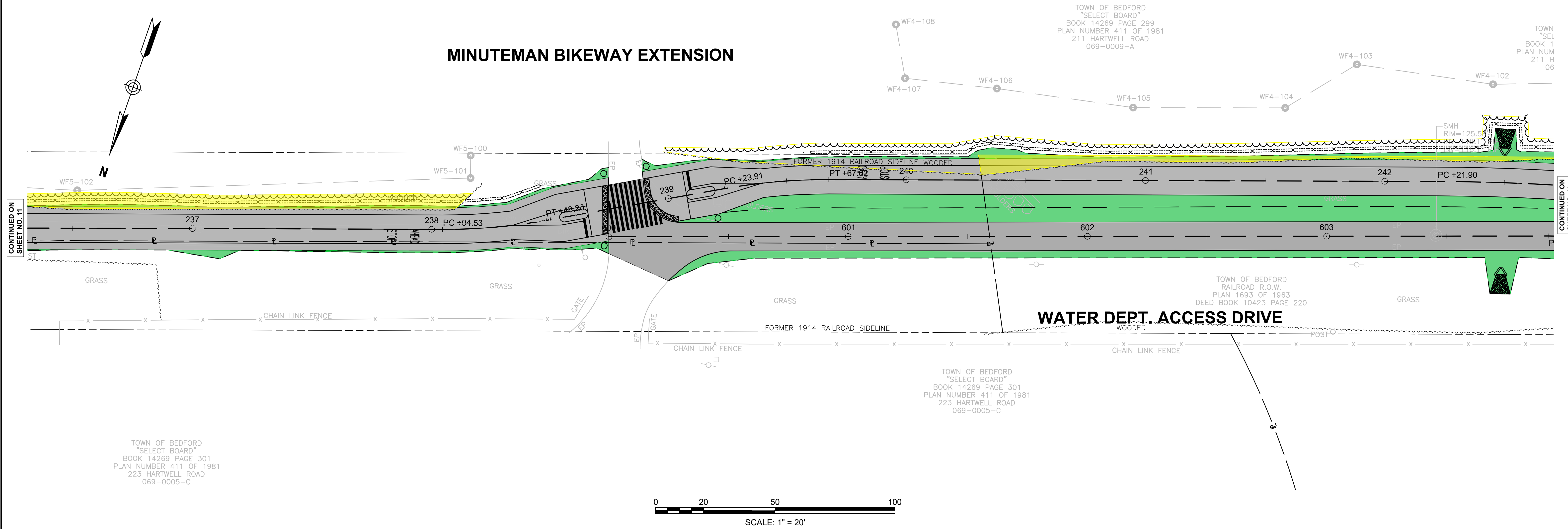


**BEDFORD  
MINUTEMAN BIKEWAY EXTENSION**

STATE	FED. AID PROJ. NO.	SHEET NO.	TOTAL SHEETS
MA	TBD	12	24
PROJECT FILE NO.		607738	

**TREE REMOVAL PLAN**

## MINUTEMAN BIKEWAY EXTENSION



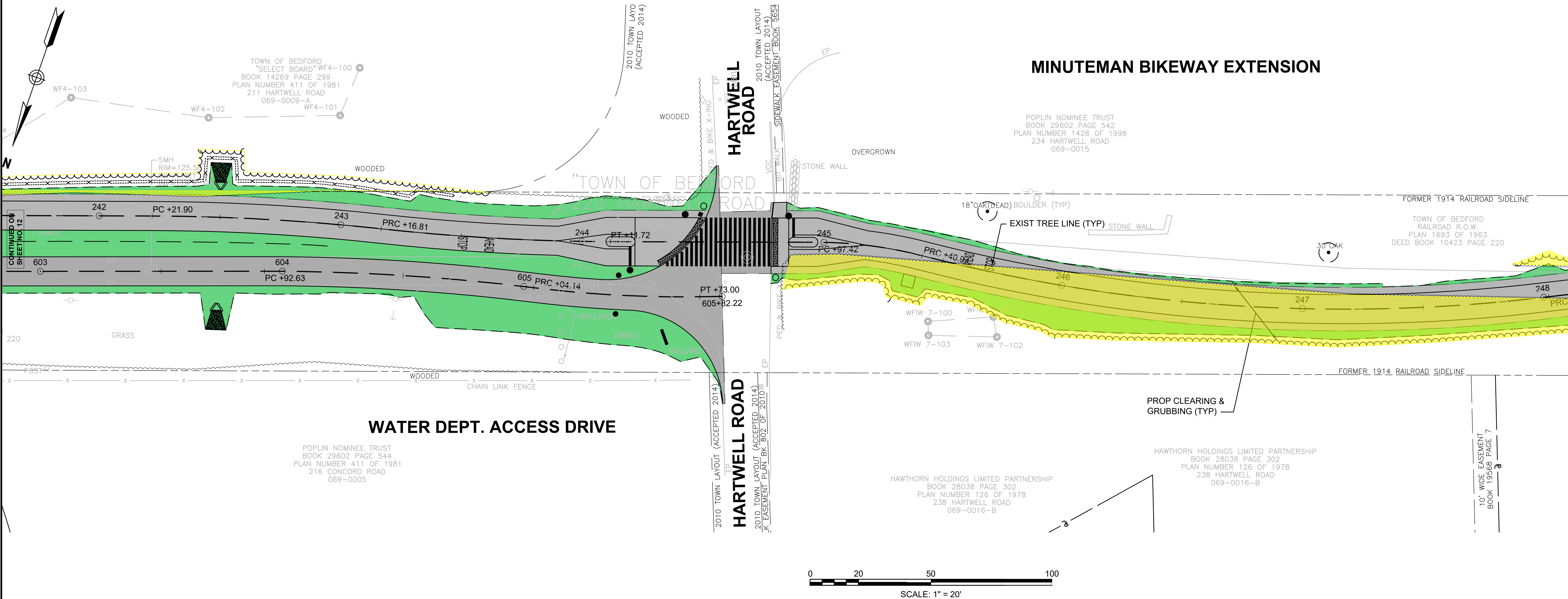
CONTINUED ON  
SHEET NO. 11

CONTINUED ON  
SHEET NO. 13

**BEDFORD  
MINUTEMAN BIKEWAY EXTENSION**

STATE	FED. AID PROJ. NO.	SHEET NO.	TOTAL SHEETS
MA	TBD	13	24
PROJECT FILE NO.		607738	

**TREE REMOVAL PLAN**

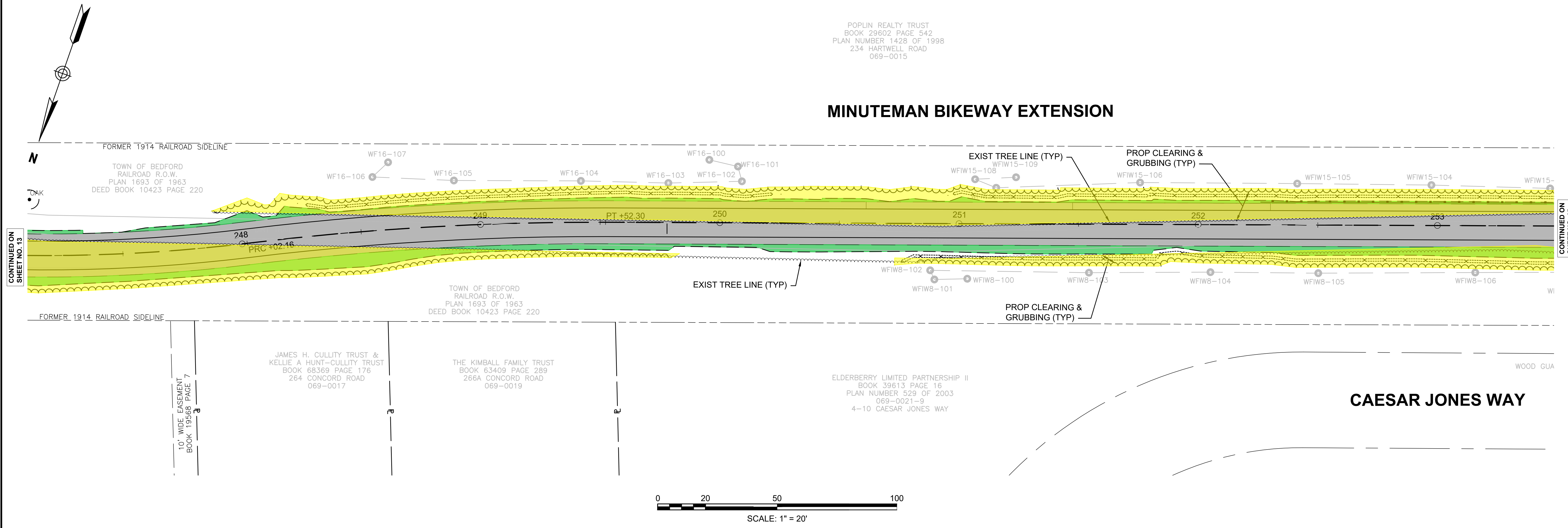


CONTINUED ON SHEET NO. 12

CONTINUED ON SHEET NO. 14

POPLIN REALTY TRUST  
 BOOK 29602 PAGE 542  
 PLAN NUMBER 1428 OF 1998  
 234 HARTWELL ROAD  
 069-0015

**MINUTEMAN BIKEWAY EXTENSION**



CONTINUED ON  
SHEET NO. 13

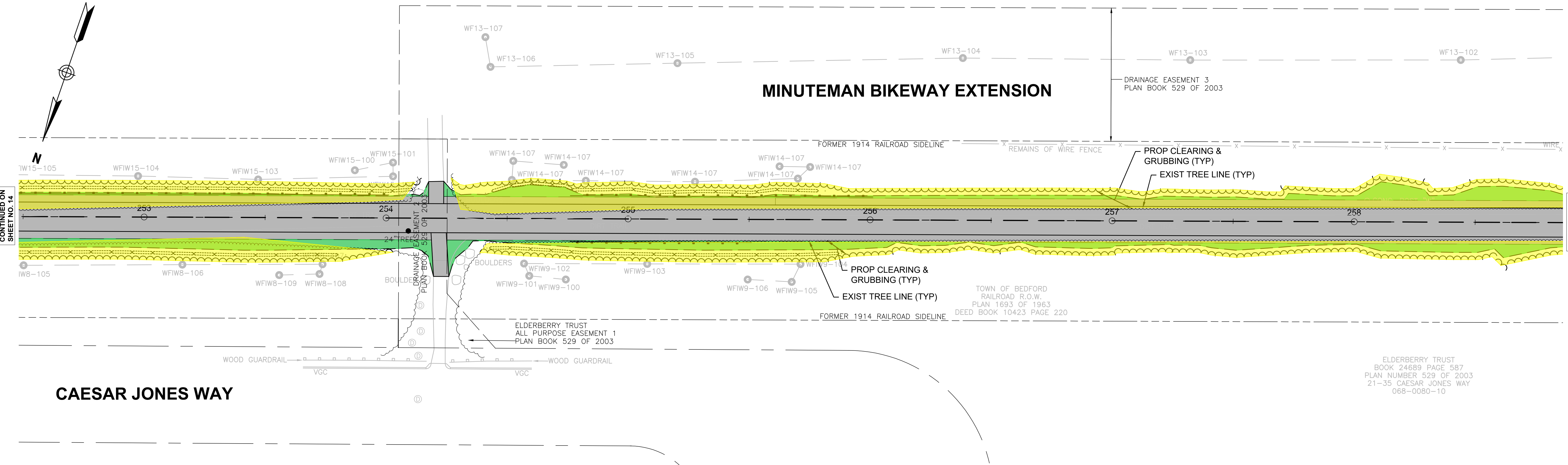
CONTINUED ON  
SHEET NO. 15

**BEDFORD  
MINUTEMAN BIKEWAY EXTENSION**

STATE	FED. AID PROJ. NO.	SHEET NO.	TOTAL SHEETS
MA	TBD	15	24
PROJECT FILE NO.		607738	

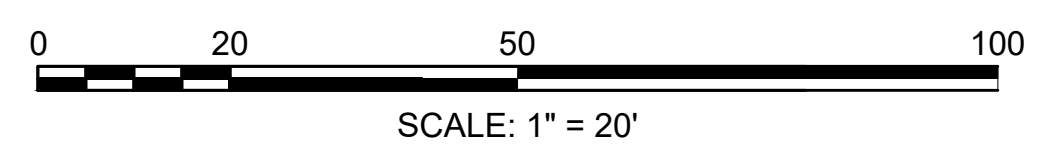
**TREE REMOVAL PLAN**

POPLIN REALTY TRUST  
BOOK 29602 PAGE 542  
PLAN NUMBER 1428 OF 1998  
234 HARTWELL ROAD  
069-0015



CONTINUED ON  
SHEET NO. 14

CONTINUED ON  
SHEET NO. 16

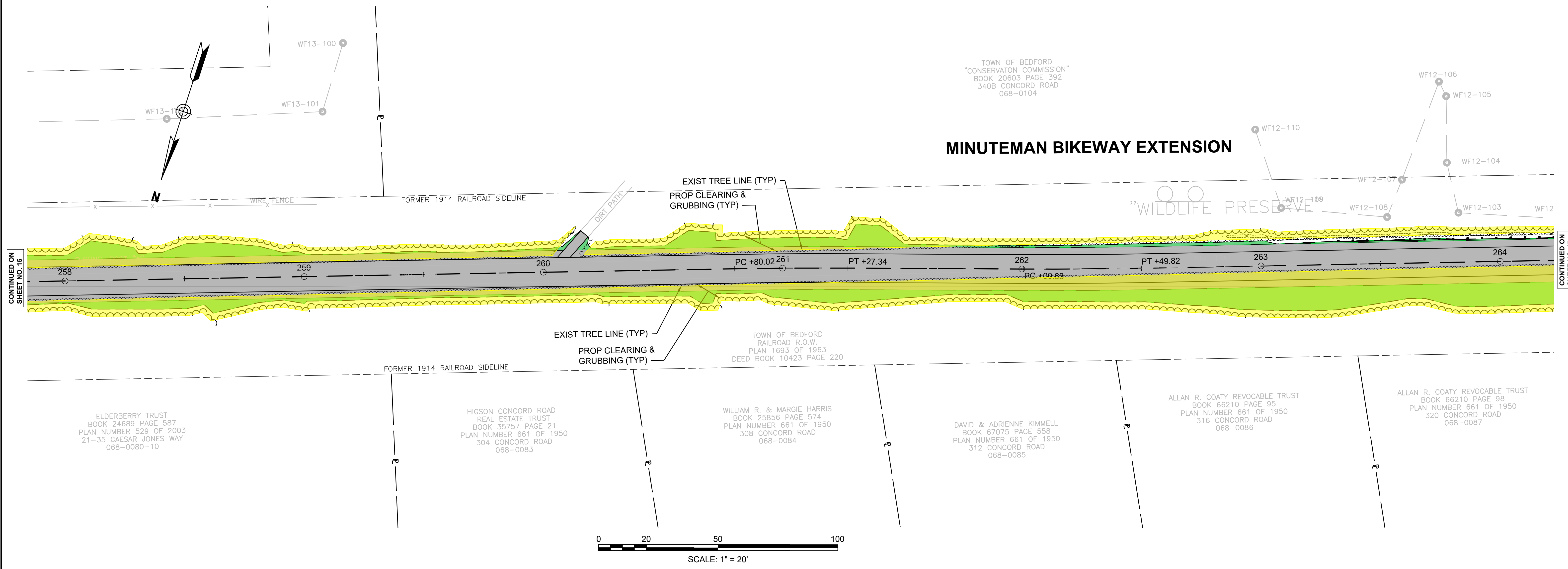


ELDERBERRY TRUST  
BOOK 24689 PAGE 587  
PLAN NUMBER 529 OF 2003  
21-35 CAESAR JONES WAY  
068-0080-10

**BEDFORD  
MINUTEMAN BIKEWAY EXTENSION**

STATE	FED. AID PROJ. NO.	SHEET NO.	TOTAL SHEETS
MA	TBD	16	24
PROJECT FILE NO.		607738	

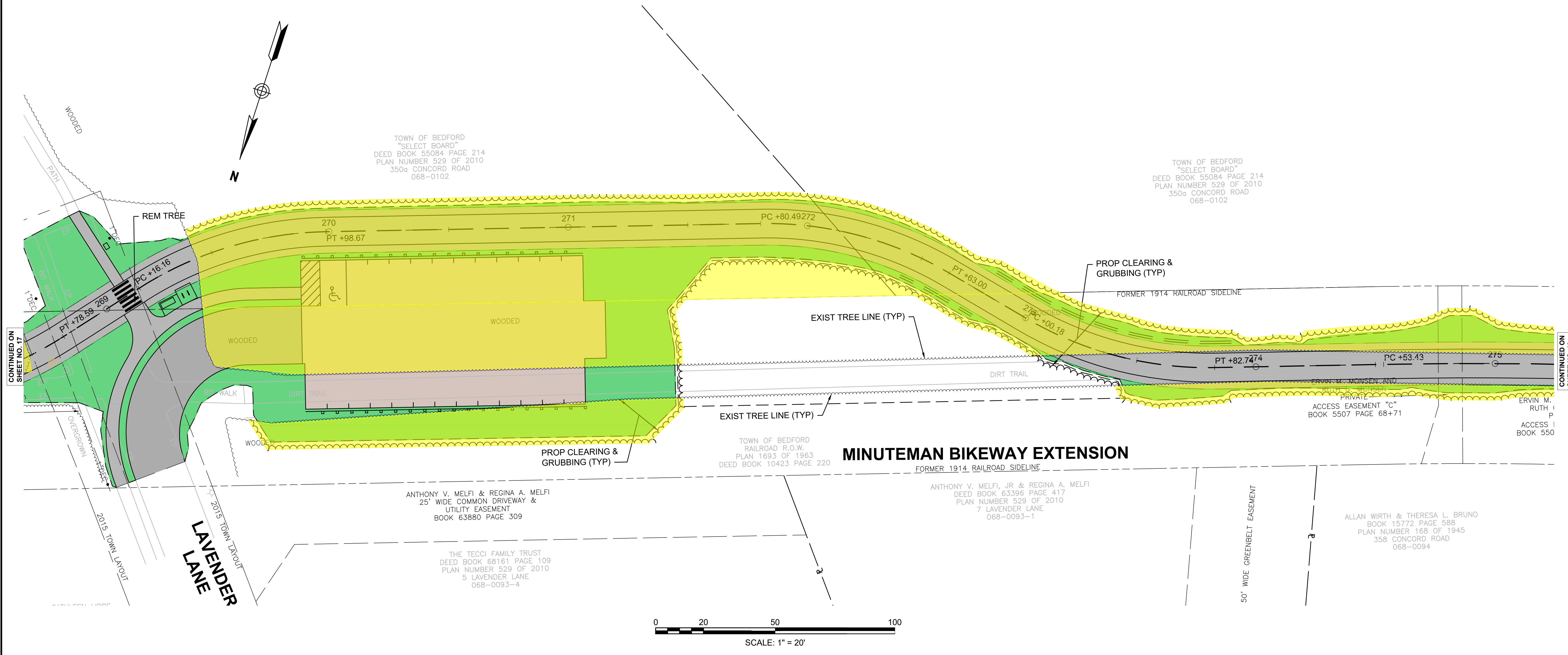
**TREE REMOVAL PLAN**



CONTINUED ON  
SHEET NO. 15

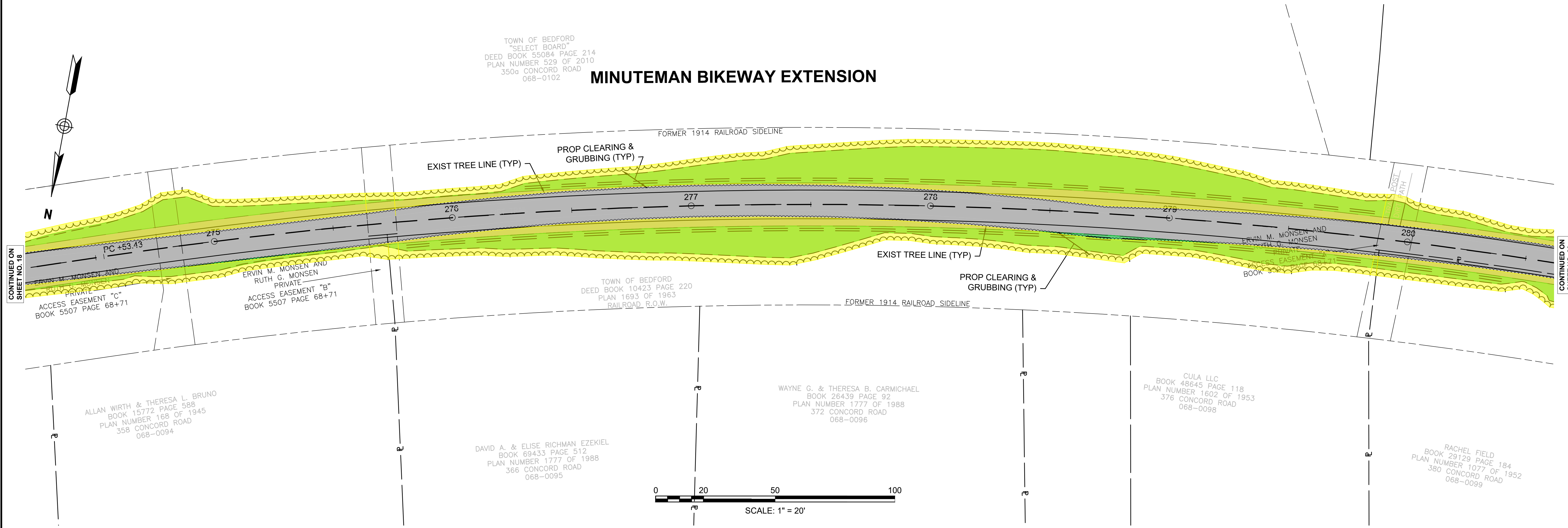
CONTINUED ON  
SHEET NO. 17





TOWN OF BEDFORD  
"SELECT BOARD"  
DEED BOOK 55084 PAGE 214  
PLAN NUMBER 529 OF 2010  
350<sup>th</sup> CONCORD ROAD  
068-0102

## MINUTEMAN BIKEWAY EXTENSION



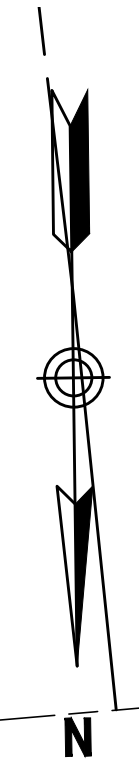
CONTINUED ON  
SHEET NO. 18

CONTINUED ON  
SHEET NO. 20

**BEDFORD  
MINUTEMAN BIKEWAY EXTENSION**

STATE	FED. AID PROJ. NO.	SHEET NO.	TOTAL SHEETS
MA	TBD	20	24
PROJECT FILE NO.		607738	

**TREE REMOVAL PLAN**



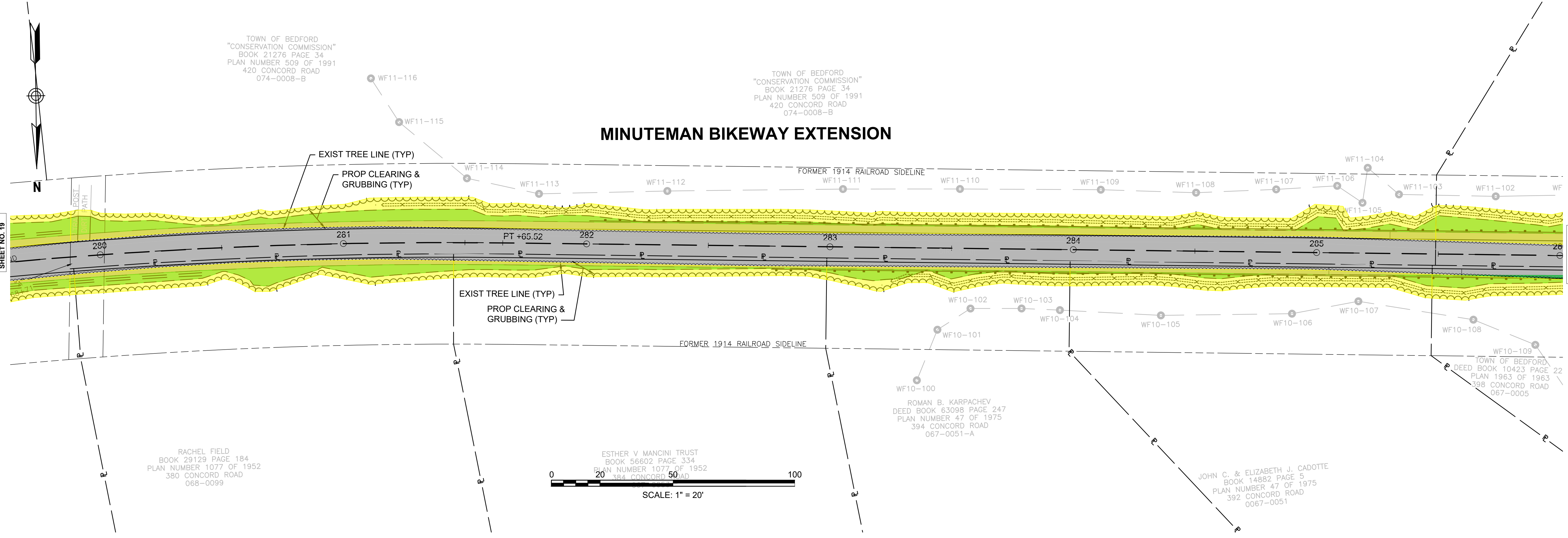
TOWN OF BEDFORD  
"CONSERVATION COMMISSION"  
BOOK 21276 PAGE 34  
PLAN NUMBER 509 OF 1991  
420 CONCORD ROAD  
074-0008-B

TOWN OF BEDFORD  
"CONSERVATION COMMISSION"  
BOOK 21276 PAGE 34  
PLAN NUMBER 509 OF 1991  
420 CONCORD ROAD  
074-0008-B

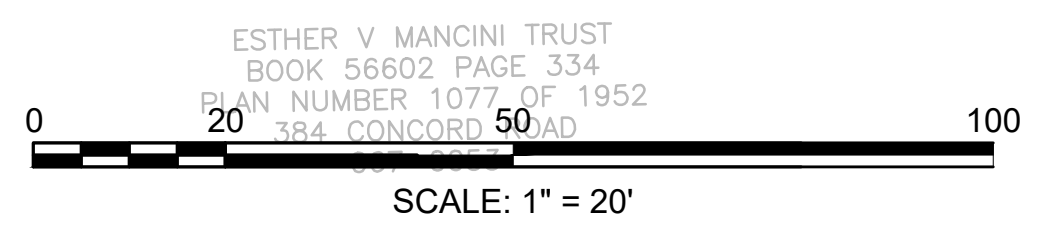
### MINUTEMAN BIKEWAY EXTENSION

CONTINUED ON  
SHEET NO. 19

CONTINUED ON  
SHEET NO. 21



RACHEL FIELD  
BOOK 29129 PAGE 184  
PLAN NUMBER 1077 OF 1952  
380 CONCORD ROAD  
068-0099



ESTHER V. MANCINI TRUST  
BOOK 56602 PAGE 334  
PLAN NUMBER 1077 OF 1952  
384 CONCORD ROAD

ROMAN B. KARPACHEV  
DEED BOOK 63098 PAGE 247  
PLAN NUMBER 47 OF 1975  
394 CONCORD ROAD  
067-0051-A

JOHN C. & ELIZABETH J. CADOTTE  
BOOK 14882 PAGE 5  
PLAN NUMBER 47 OF 1975  
392 CONCORD ROAD  
0067-0051

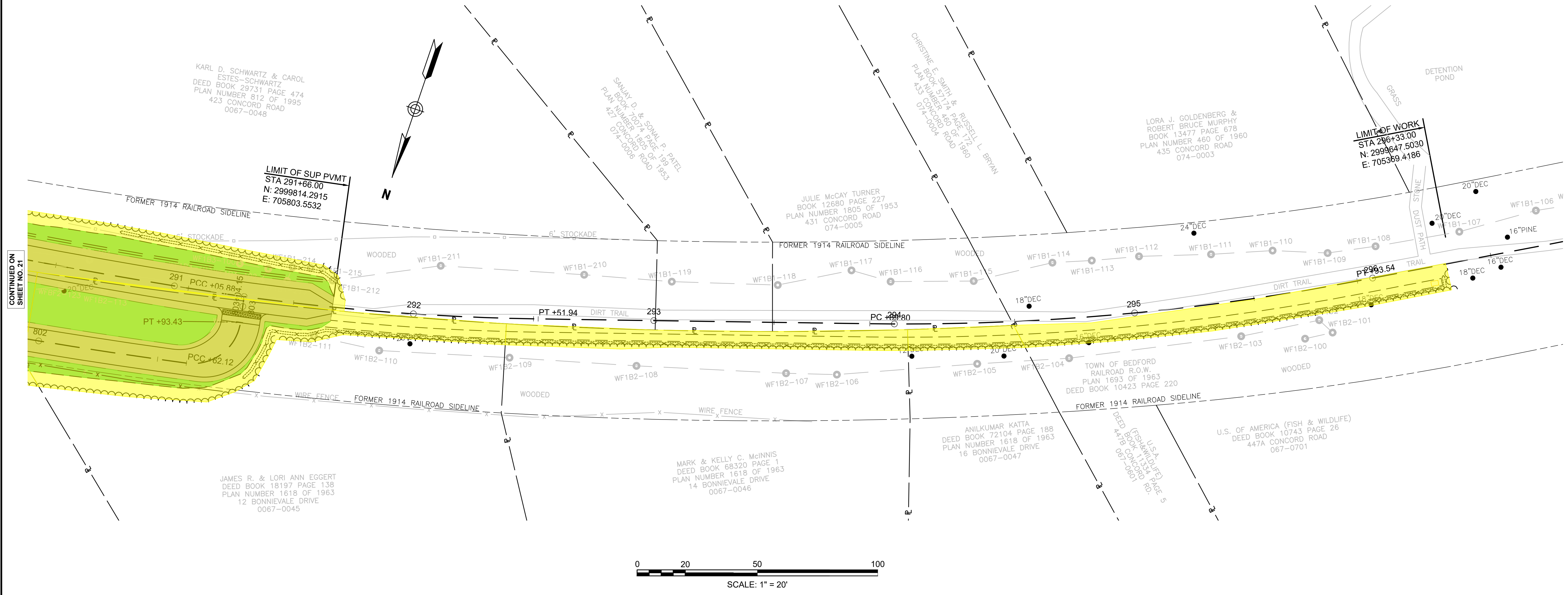
TOWN OF BEDFORD  
DEED BOOK 10423 PAGE 22  
PLAN 1963 OF 1963  
398 CONCORD ROAD  
067-0005



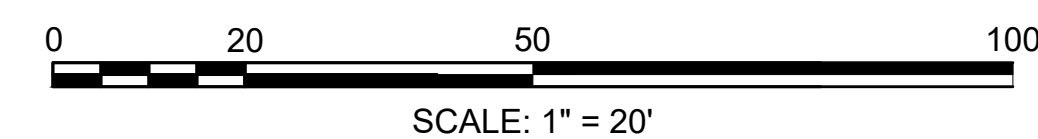
**BEDFORD  
MINUTEMAN BIKEWAY EXTENSION**

STATE	FED. AID PROJ. NO.	SHEET NO.	TOTAL SHEETS
MA	TBD	22	24
PROJECT FILE NO.		607738	

**TREE REMOVAL PLAN**



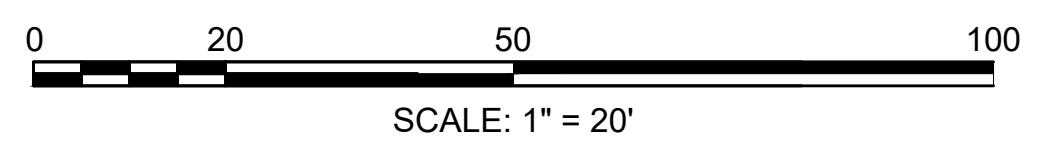
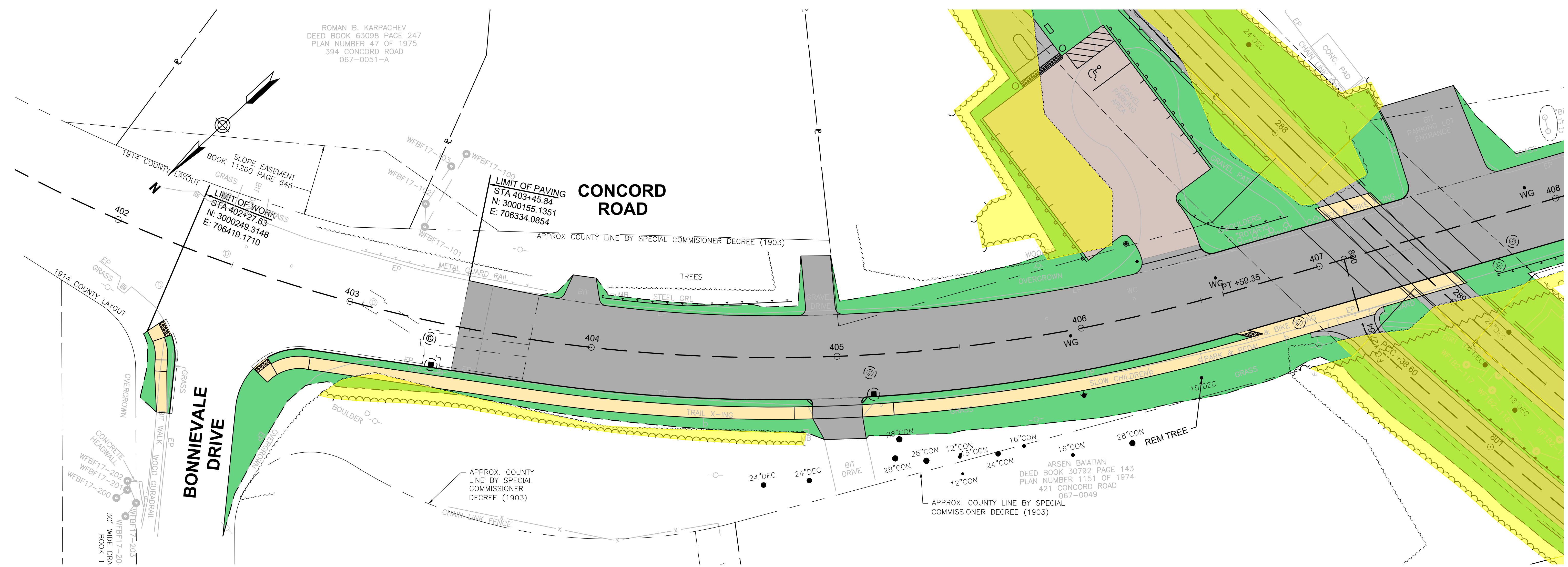
CONTINUED ON  
SHEET NO. 21



CONTINUED ON  
SHEET NO. 21

CONTINUED ON  
SHEET NO. 24

CONTINUED ON  
SHEET NO. 21



**BEDFORD  
MINUTEMAN BIKEWAY EXTENSION**

STATE	FED. AID PROJ. NO.	SHEET NO.	TOTAL SHEETS
MA	TBD	24	24
PROJECT FILE NO.		607738	

**TREE REMOVAL PLAN**

